

# VitalMED Plastic Components Catalog



## Material Abbreviations

|      |   |      |                            |
|------|---|------|----------------------------|
| ABS  | Acrylonitrile Butadiene Styrene Copolymer | PC   | Polycarbonate              |
| BS   | Butadiene Styrene Rubber                  | PES  | Polyether Sulfone          |
| PIBI | Butyl Rubber                              | PE   | Polyethylene               |
| CHDM | Cyclohexanedimethanol                     | PET  | Polyethylene Terephthalate |
| COPE | Copolyester                               | PI   | Polyimide                  |
| EPDM | Ethylene Propylene Terpolymer Rubber      | PP   | Polypropylene              |
| EVA  | Ethylene Vinyl Acetate                    | PS   | Polystyrene                |
| HDPE | High Density Polyethylene                 | PSU  | Polysulfone                |
| HIPS | High Impact Polystyrene                   | PTFE | Polytetrafluoroethylene    |
| PI   | Polyisoprene                              |      |                            |
| LDPE | Low Density Polyethylene                  | PU   | Polyurethane               |
| MABS | Methyl Methacrylate ABS                   | PVA  | Polyvinyl Acetate          |
| NPRN | Neoprene                                  | PVC  | Polyvinyl Chloride         |
| NBR  | Nitrile Butadiene Rubber                  | SS   | Stainless Steel            |
| PETG | PET modified with CHDM                    | SBR  | Styrene Butadiene Rubber   |
| POM  | Polyacetal                                | TPE  | Thermoplastic Elastomer    |
| PA   | Polyacrylate                              | TPR  | Thermoplastic Rubber       |
| PBT  | Polybutylene Terephthalate                |      |                            |

## Metric Conversions

| When You Know        | Multiply By | To Find              |
|----------------------|-------------|----------------------|
| teaspoon (tsp)       | 5           | milliliters (ml)     |
| tablespoon (Tbsp)    | 15          | milliliters (ml)     |
| fluid ounces (fl oz) | 30          | milliliters (ml)     |
| cups (c)             | 0.24        | liters (L)           |
| pints (pt)           | 0.47        | liters (L)           |
| milliliters (ml)     | 0.03        | fluid ounces (fl oz) |
| liters (L)           | 2.11        | pints (pt)           |
| liters (L)           | 1.06        | quarts (qt)          |

\* = Information Available Upon Request

# Table of Contents

|                                       |           |
|---------------------------------------|-----------|
| <b>Assemblies.....</b>                | <b>6</b>  |
| Burette Assemblies .....              | 6         |
| Extension Sets .....                  | 6         |
| <b>Bags.....</b>                      | <b>7</b>  |
| Blown Film Bags .....                 | 7         |
| <b>Caps.....</b>                      | <b>8</b>  |
| Double Dead Enders .....              | 8         |
| Female Luer Caps Non-Vented.....      | 8         |
| Female Luer Caps Vented .....         | 9         |
| Male Luer Caps Non-Vented .....       | 10        |
| Male Luer Caps Vented.....            | 10        |
| Miscellaneous Caps .....              | 11        |
| <b>Check Valves .....</b>             | <b>12</b> |
| Check Valves.....                     | 12        |
| In-line Check Valves with Luers ..... | 13        |
| Manifold Check Valves .....           | 13        |
| <b>Clamps.....</b>                    | <b>14</b> |
| Holding Clips .....                   | 14        |
| Non-Reopening Clamps.....             | 14        |
| On-Off Clamps .....                   | 14        |
| Pinch/Ratchet Clamps .....            | 15        |
| Roller Clamps.....                    | 17        |
| Slide Clamps.....                     | 18        |
| <b>Connectors .....</b>               | <b>19</b> |
| 5 to 1, 6 to 1.....                   | 19        |
| Adaptors.....                         | 19        |
| Bag Ports .....                       | 20        |
| Breakable Connectors.....             | 21        |
| Bowl Connectors.....                  | 21        |
| ENFIT .....                           | 21        |

\* = Information Available Upon Request

|                                    |           |
|------------------------------------|-----------|
| Large Bore Female .....            | 22        |
| Large Bore Male.....               | 23        |
| Multi-Way Connectors.....          | 24        |
| Pump Connectors.....               | 24        |
| Reducers.....                      | 25        |
| Suction Connectors .....           | 25        |
| T-Connectors .....                 | 26        |
| Y-Connectors Parallel .....        | 26        |
| Y-Connectors Split.....            | 27        |
| <b>Drip Chambers .....</b>         | <b>29</b> |
| Covers.....                        | 29        |
| Drip Chamber Assembly Vented ..... | 29        |
| Drip Chambers .....                | 30        |
| <b>Filters .....</b>               | <b>31</b> |
| Filters.....                       | 31        |
| IV Filters.....                    | 31        |
| <b>Injection Sites/Ports .....</b> | <b>32</b> |
| Luers .....                        | 32        |
| Pre-Slit/Swabable Needle Free..... | 33        |
| Y-Site.....                        | 34        |
| <b>Luers.....</b>                  | <b>35</b> |
| Female Luers .....                 | 35        |
| Barbed Female Luers .....          | 37        |
| Locking Rings.....                 | 37        |
| Male Luers.....                    | 38        |
| Barbed Male Luers.....             | 40        |
| <b>Other.....</b>                  | <b>42</b> |
| Cups .....                         | 42        |
| Other .....                        | 42        |
| <b>Pillow Chambers .....</b>       | <b>43</b> |
| Pillow Chambers.....               | 43        |
| <b>Safety Products .....</b>       | <b>44</b> |
| Scalpels.....                      | 44        |

\* = Information Available Upon Request

---

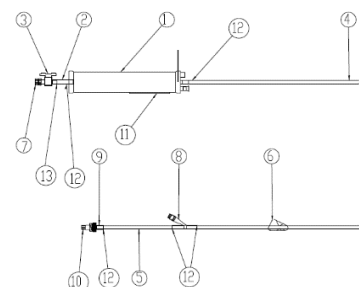
|   |           |
|---|-----------|
| <b>Chambers</b> .....                             | <b>45</b> |
| Chamber Assemblies.....                           | 45        |
| Chamber Bodies .....                              | 45        |
| Chamber Caps.....                                 | 45        |
| Drip Chamber Assembly Non-Vented.....             | 46        |
| Drip Chamber Assembly Vented .....                | 46        |
| Drip Chamber Assembly with Spike Non-Vented ..... | 47        |
| Drip Chamber Assembly with Spike Vented.....      | 47        |
| <b>Spikes</b> .....                               | <b>48</b> |
| Non-Vented Spikes .....                           | 48        |
| Spike Caps.....                                   | 49        |
| Vented Spikes.....                                | 49        |
| <b>Stopcocks</b> .....                            | <b>51</b> |
| Multi-Way .....                                   | 51        |
| <b>Transducer Protectors</b> .....                | <b>52</b> |
| Transducer Protectors .....                       | 52        |
| <b>Index</b> .....                                | <b>53</b> |

\* = Information Available Upon Request

# Assemblies

## Burette Assemblies

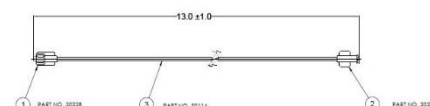
| PART NUMBER | COLOR | MATERIAL/<br>STERILIZATION/<br>QUANTITY   | DESCRIPTION                          |
|-------------|-------|---|--------------------------------------|
| 21424       | *     | CAP- PI, ABS.<br>HANGER- PE. AIR<br>FILTER-PP TOP<br>CAP- ABS. BODY-<br>TENITE,<br>PROPIONATE.<br>BOTTOM CAP-<br>ABS. / EtO / 100 | BURRETTE CHAMBER,<br>100 ML, 20 DROP |
| 70006       | *     | * / EtO / 72  | 100ML, 20 DROP,<br>BURRETTE ASSY     |



70006

## Extension Sets

| PART NUMBER | COLOR       | MATERIAL/<br>STERILIZATION/<br>QUANTITY | DESCRIPTION   |
|-------------|-------------|---|---|
| 70020       | Clear, Blue | PC / Gamma &<br>EtO / 1200              | 13" EXTENSION SET<br>ASSEMBLY WITH<br>FEMALE LUERS                                |
| 70050       | Clear       | PC + PVC / 300                          | 13 INCH EXTENSION<br>SET ASSEMBLY, DEHP<br>FREE                                   |
| 20268       | Clear       | PVC + PC / 1600                         | EXTENSION LINE<br>ASSEMBLY WITH<br>MALE/FEMALE LUER<br>LOCKS 300 PSI,<br>20.7 BAR |
| 20278       | Clear       | PVC, PC / 1600                          | EXTENSION LINE<br>ASSEMBLY WITH<br>MALE AND FEMALE<br>LUER LOCKS 15 PSI,<br>1 BAR |



70050

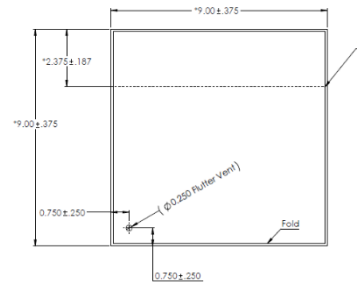
\* = Information Available Upon Request

# Bags

## Blown Film Bags

| PART NUMBER | COLOR | MATERIAL/<br>STERILIZATION/<br>QUANTITY | DESCRIPTION   |
|-------------|-------|---|---|
| 21768       | *     | PE / EtO / 3000                         | 9" X 9" PERFORATED BAG, 12 PERF/IN- 0.50 TIE, UNPRINTED |

Additional customizable flexible packaging available upon request.



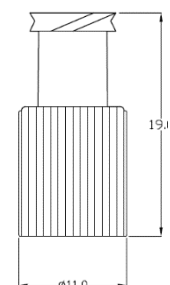
21768

\* = Information Available Upon Request

# Caps

## Double Dead Enders

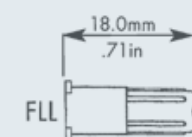
| PART NUMBER | COLOR | MATERIAL/<br>STERILIZATION/<br>QUANTITY | DESCRIPTION  |
|-------------|-------|---|--|
| 21459       | *     | PP / EtO / 15000                        | DOUBLE DEADENDER,<br>MALE/FEMALE LUER<br>LOCK, SINGLE-<br>THREAD |



21459

## Female Luer Caps Non-Vented

| PART NUMBER | COLOR   | MATERIAL/<br>STERILIZATION/<br>QUANTITY | DESCRIPTION                                 |
|-------------|---------|---|---|
| 20356       | Natural | PE / Gamma &<br>EtO / 40000             | NON-VENTED FEMALE<br>LUER LOCK CAP          |
| 20625       | Natural | PVC / EtO / 5000                        | CAP, FEMALE DIN,<br>NON-VENTED, SOFT<br>PVC |
| 21346       | White   | PP / Gamma &<br>EtO / 10000             | CAP, FEMALE DIN,<br>NON-VENTED              |
| 20447       | Yellow  | PP / Gamma &<br>EtO / 20000             | CAP, FEMALE LUER,<br>NON-VENTED             |
| 20448       | White   | PP / Gamma &<br>EtO / 5000              |   |
| 20479       | Red     | PE / Gamma &<br>EtO / 50000             |   |
| 21867       | Red     | HDPE / Gamma &<br>EtO / 50000           |   |
| 21673       | Blue    | PE / Gamma &<br>EtO / 20000             | CLOSED FEMALE<br>LUER LOCK CAP              |
| 21672       | Red     | PE / Gamma &<br>EtO / 20000             |   |



std.packing: 20,000 pcs

20448

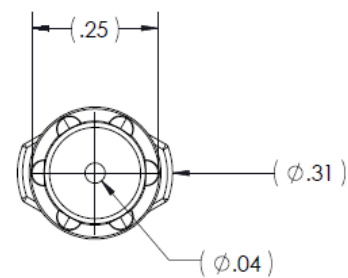
\* = Information Available Upon Request



|       |   |               |  |
|-------|---|---------------|--|
| 21613 | * | ABS / EtO / * | FEMALE LUER LOCK CAP W/WINGS, NON-VENTED |
|-------|---|---------------|--|

## Female Luer Caps Vented

| PART NUMBER | COLOR      | MATERIAL/<br>STERILIZATION/<br>QUANTITY | DESCRIPTION                            |
|-------------|------------|---|--|
| 21376       | White      | PP / Gamma & EtO / 20000                | CAP, FEMALE LUER, VENTED               |
| 21342       | Blue       | PP / Gamma & EtO / 50000                |  |
| 21682       | Light Blue | LDPE / Gamma & EtO / 20000              | FEMALE LUER BREATHER CAP (TWIST ON)    |
| 21790       | White      | ZYTEL / * / *                           | FEMALE LUER THREAD STYLE CAP           |
| 21634       | Red        | PVC / EtO / 20000                       | VENTED FEMALE LUER LOCK CAP, DEHP-FREE |
| 21637       | Blue       | ABS / EtO / 20000                       |  |
| 20480       | Natural    | PE / Gamma & EtO / 40000                | VENTED FEMALE LUER LOCK CAP            |
| 20326       | Natural    | PE / Gamma & EtO / 40000                |  |
| 20373       | Red        | PVC / EtO / 20000                       |  |
| 20474       | Blue       | PVC / EtO / 20000                       |  |
| 21599       | *          | PC / EtO / 18000                        |  |

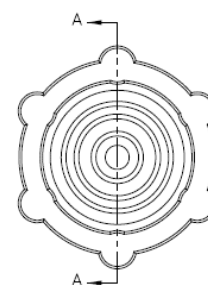


21376

\* = Information Available Upon Request

## Male Luer Caps Non-Vented

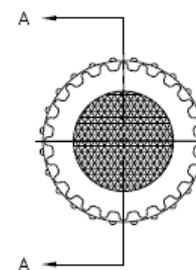
| PART NUMBER | COLOR  | MATERIAL/<br>STERILIZATION/<br>QUANTITY | DESCRIPTION                   |
|-------------|--------|---|-------------------------------|
| 20449       | Blue   | ABS / Gamma & EtO / 5000                | CAP, MALE LUER,<br>NON-VENTED |
| 20450       | Yellow | ABS / Gamma & EtO / 5000                |                               |
| 21334       | White  | ABS / Gamma & EtO / 30000               |                               |
| 34418403    | White  | ABS / Gamma & EtO / 30000               |                               |
| C033408403  | White  | ABS / Gamma & EtO / 40000               |                               |
| 21723       | Blue   | PVC / Gamma & EtO / 10000               | LUER THREAD<br>COVER, NO STEM |
| 21386       | Yellow | ABS / Gamma & EtO / 9000                | MALE CAP, NON-<br>VENTED      |
| 21622       | *      | PC / EtO / 20000                        |                               |
| 20384       | Blue   | ABS / EtO / 20000                       | CLOSED MALE LUER<br>LOCK CAP  |
| 20459       | White  | PP / EtO / 20000                        |                               |
| 20573       | White  | ABS / EtO / 20000                       |                               |



20449

## Male Luer Caps Vented

| PART NUMBER | COLOR   | MATERIAL/<br>STERILIZATION/<br>QUANTITY | DESCRIPTION                |
|-------------|---------|---|----------------------------|
| 21677       | White   | LDPE, $\gamma$ , EtO, 40000             | LDPE / Gamma & EtO / 40000 |
| 33508200    | *       | PE, $\gamma$ , EtO, 14000               | PE / Gamma & EtO / 14000   |
| 20623       | Natural | HDPE, EtO, 10000                        | HDPE / EtO / 10000         |



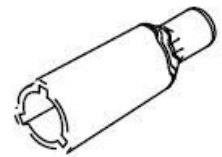
21677

\* = Information Available Upon Request

|       |         |                          |                           |
|-------|---------|--------------------------|---------------------------|
| 20255 | Natural | PP / EtO / 20000         | VENTED MALE LUER LOCK CAP |
| 20308 | Blue    | PP / EtO & Steam / 20000 |                           |
| 20390 | Natural | PP / Gamma & EtO / 20000 |                           |
| 20476 | Red     | PP / EtO / 20000         |                           |

## Miscellaneous Caps

| PART NUMBER | COLOR      | MATERIAL/<br>STERILIZATION/<br>QUANTITY | DESCRIPTION                                 |
|-------------|------------|---|---|
| 21517       | Clear      | PLASTISOL / EtO / *                     | 3MM CAP                                     |
| 21518       | Clear      | PLASTISOL / EtO / *                     | 5MM CAP                                     |
| 18908200    | Natural    | PE / Gamma & EtO / 10000                | CAP FOR SPIKE VENTED                        |
| 25818200    | Natural    | PE / Gamma & EtO / 12000                |   |
| 21175       | Natural    | LDPE / Gamma & EtO / 7500               | CAP, ENTERAL CONNECTOR, NON-VENTED          |
| 20220       | Natural    | LDPE / Gamma & EtO / 15000              | CAP, VENTED, POLYETHYLENE                   |
| 60007       | Clear      | VINYL / * / 5000                        | COVER, NON-VENTED                           |
| 8109789000  | Light Blue | HDPE, Gamma, 5000                       | INFUSION CAP, 1-WAY                         |
| 21705       | Clear      | PP / * / 8                              | MALE PORT, COVER, PP CLEAR                  |
| 21410       | Blue       | VINYL / EtO / 10000                     | VENTED CAP                                  |
| 21836       | Blue       | VINYL / EtO / *                         |   |
| 21560       | Clear      | PLASTISOL / EtO / *                     | VENTED CAP FOR TUBE OD 1/8" X 1/32" (2-WAY) |
| 8305170000  | Natural    | PP / EtO & Steam / 20000                | VENTED CAP II                               |
| 21408       | *          | ABS / EtO / *                           | MALE LUER LOCK CAP FOR 3.2MM OD TUBE        |



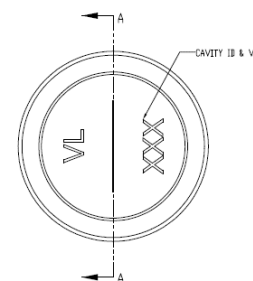
21410

\* = Information Available Upon Request

# Check Valves

## Check Valves

| PART NUMBER | COLOR               | MATERIAL/<br>STERILIZATION/<br>QUANTITY | DESCRIPTION  |
|-------------|---------------------|---|--|
| 21528       | *                   | ABS / EtO / 10000                       | CHECK VALVE FOR 4.1MM TUBING, LOW PRESSURE (0.015 TO 0.174 PSI)                                      |
| 21794       | Transparent         | ABS / * / *                             | CHECK VALVE SOCKET FOR .094" (2.4MM) OD TUBING TO TUBING   |
| 21824       | Blue<br>Transparent | SAN / Gamma &<br>EtO / *                | CHECK VALVE V2000 V WITH FEMALE LUER LOCK, SAN TRANSPARENT, AND TUBING FITMENT 3.0X4.1+2.0 NEG, MABS |
| 21825       | Blue<br>Transparent | SAN / Gamma &<br>EtO / *                | CHECK VALVE V2000 V WITH FEMALE LUER-LOCK, SAN TRANSPARENT AND TUBING FITMENT 4.1NEG., MABS          |
| 21823       | Blue<br>Transparent | SAN / Gamma &<br>EtO / *                | CHECK VALVE V2000 V WITH FEMALE LUER-LOCK, SAN TRANSPARENT AND MALE LUER-LOCK SAN                    |
| 60016       | Blue                | P / * / 5187                            | L-370 VALVE  |
| 20445       | Natural             | PC / Gamma &<br>EtO / 8000              | SWABABLE VALVE WITH MALE LUER  |
| 21755       | Blue, White         | PVC / Gamma &<br>EtO / 2500             | VALVE, TWISTED TUBE END  |

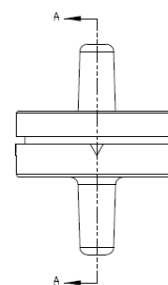


60016

\* = Information Available Upon Request

## In-line Check Valves with Luers

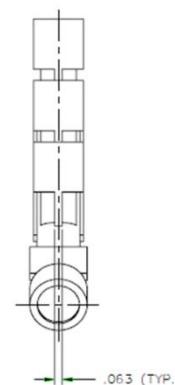
| PART NUMBER | COLOR              | MATERIAL/<br>STERILIZATION/<br>QUANTITY | DESCRIPTION   |
|-------------|--------------------|---|---|
| 21786       | Transparent        | SILICONE / EtO / *                      | CHECK VALVE LUER LOCK FEMALE LUER LOCK MALE (OPENING PRESSURE=6 MBAR) |
| 21610       | *                  | SAN / EtO / 10000                       | CHECK VALVE, MALE AND FEMALE LUER LOCK                                |
| 20305       | White              | ABS / Gamma & EtO / 10000               | CHECK VALVE, W/ MALE LUER & LUER LOCK, GAMMA                          |
| 21727       | White, Clear, Blue | ACRYLIC / Gamma & EtO / *               | INLINE CHECK VALVE  |



21727

## Manifold Check Valves

| PART NUMBER | COLOR | MATERIAL/<br>STERILIZATION/<br>QUANTITY | DESCRIPTION      |
|-------------|-------|---|------------------|
| 60048       | Clear | PVC / * / 600                           | MANIFOLD, 3 TO 1 |



60048

\* = Information Available Upon Request

# Clamps

## Holding Clips

| PART NUMBER | COLOR | MATERIAL/<br>STERILIZATION/<br>QUANTITY | DESCRIPTION  |
|-------------|-------|---|--|
| 21694       | Clear | VINYL / 3000                            | 2-HOLE CLIP NICKEL PLATED STEEL AND EXTENDED CLEAR VINYL STRAP |



21694

## Non-Reopening Clamps

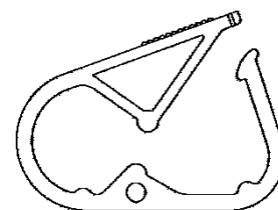
| PART NUMBER | COLOR | MATERIAL/<br>STERILIZATION/<br>QUANTITY | DESCRIPTION   |
|-------------|-------|---|---|
| 20436       | Blue  | PP / EtO / 2500                         | NON-REOPENING CLAMP FOR TUBES 3.5 X 5.5MM & 4.8 X 6.8MM .138 X .217IN & .189 X .268IN |
| 21423       | Blue  | PP / EtO / 4000                         | NON-REOPENING CLAMP FOR .127" ID X .187" OD TUBE                                      |



20436

## On-Off Clamps

| PART NUMBER | COLOR  | MATERIAL/<br>STERILIZATION/<br>QUANTITY | DESCRIPTION  |
|-------------|--------|---|--|
| 21508       | Yellow | PP / EtO / 5000                         | ON-OFF MINI CLAMP FOR TUBES OD 2.0-2.5-3.0-4.1-5.5MM |
| 21584       | Black  | PP / EtO / 5000                         |  |
| 21454       | Green  | PP / EtO / 5000                         |  |

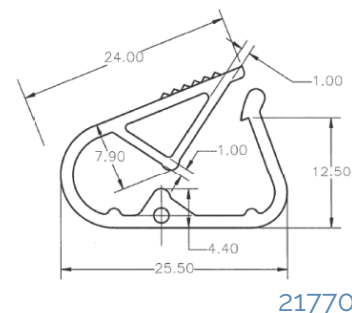


21508

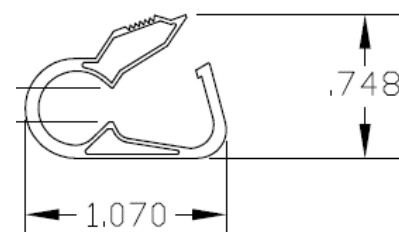
\* = Information Available Upon Request

## Pinch/Ratchet Clamps

| PART NUMBER | COLOR      | MATERIAL/<br>STERILIZATION/<br>QUANTITY | DESCRIPTION  |
|-------------|------------|---|--|
| 21770       | Natural    | PP / Gamma & EtO / 10000                | PINCH CLAMP FOR .118" (3.0MM) OD TUBE  |
| 21651       | *          | PP / EtO / 5000                         | PP30, CLAMP  |
| 21652       | *          | PP / EtO / 2500                         | PP40, CLAMP  |
| 200320      | Natural    | PP / * / *                              | CLAMP BIG  |
| 60074       | Red, White | ACETAL / EtO / 7500                     | CLAMP, LARGE RATCHET   |
| 21626       | Red        | PP / Gamma, EtO & Steam / 2000          | CLAMP, RATCHET, SMALL  |
| 21627       | Natural    | PP / Gamma, EtO & Steam / 2000          |  |
| 20262       | White      | PP / EtO / 5000                         | LARGE RATCHET CLAMP ON/OFF   |
| 21611       | *          | PP / EtO / 5000                         | LARGE TWO-STEP RATCHET CLAMP FOR 6.8 MM OD TUBES   |
| 20724       | Blue       | PP / EtO / 5000                         | ON-OFF MEDI CLAMP FOR TUBES O.D. 5.5MM - 6.8MMN .217IN - .268IN                                |
| 20725       | White      | PP / EtO / 5000                         |  |
| 21413       | Yellow     | PP / EtO / 5000                         |  |
| 20722       | White      | PP / * / *                              | ON-OFF MINI CLAMP FOR TUBES O.D. 2.0MM - 2.5MM - 3.0MM - 4.1MM .079IN - .098 - .118IN - .161IN |
| 21337       | Blue       | PP / EtO / 5000                         |  |
| 21338       | Red        | PP / EtO / 5000                         |  |
| 20238       | White      | PP / Gamma, EtO & Steam / 12000         | ON-OFF SMALL RATCHET CLAMP FOR TUBES O.D. 2.0-2.5-3.0-4.1-5.5MM; .079-.098-.118-.161-.217 IN   |
| 20239       | Natural    | ACETAL / EtO / 12000                    |  |



21770



21626

\* = Information Available Upon Request

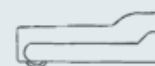
|       |        |                                  |                                       |
|-------|--------|----------------------------------|---------------------------------------|
| 20260 | Blue   | PP / Gamma & EtO / 2000          | RATCHET CLAMP, LG, 6 POS              |
| 20261 | Red    | PP / Gamma & EtO / 2000          |                                       |
| 20252 | White  | PP / Gamma & EtO / 2000          | RATCHET CLAMP, LG                     |
| 20310 | White  | ABS / Gamma & EtO / 5000         | RATCHET CLAMP, MINI, ON/OFF           |
| 20404 | Yellow | ACETAL / EtO / 7500              | RATCHET CLAMP, SM, ON/OFF             |
| 21414 | Blue   | ACETAL / EtO / 7500              |                                       |
| 21404 | Blue   | PP / EtO / 8000                  | RATCHET CLAMP, SMALL, 2-5.5MM TUBE OD |
| 21608 | Red    | PP / EtO / 8000                  | SMALL ON/OFF RATCHET CLAMP            |
| 60029 | White  | PP / Gamma & EtO / 10000         |                                       |
| 60034 | Green  | PP / Gamma, EtO & E-Beam / 10000 | SMALL ON/OFF RATCHET CLAMP            |
| 60035 | Purple | PP / Gamma, EtO & E-Beam / 10000 |                                       |
| 60036 | Yellow | PP / Gamma, EtO & E-Beam / 10000 |                                       |
| 60037 | Red    | PP / Gamma, EtO & E-Beam / 10000 |                                       |
| 60038 | Blue   | PP / Gamma, EtO & E-Beam / 10000 |                                       |
| 60044 | White  | PP / Gamma, EtO & E-Beam / 10000 |                                       |



20252



## Roller Clamps



std.packing: 5,000 pcs

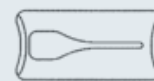
| PART NUMBER | COLOR          | MATERIAL/<br>STERILIZATION/<br>QUANTITY | DESCRIPTION  |
|-------------|----------------|---|--|
| 30170       | White          | ABS / Gamma & EtO / 2000                | PRECISION ROLLER CLAMP ASSEMBLY FOR .110" X .157" TUBE |
| 37018       | Blue, White    | ABS / EtO / *                           | PRECISION ROLLER CLAMP ASSEMBLY FOR .189" X .267" TUBE |
| 21791       | White, Neutral | PS, PE / * / 2500                       | ROLLER CLAMP ASSY X TUBE Ø 3.0X4.1                     |
| 21267       | White          | ABS / Gamma & EtO / 2000                | ROLLER CLAMP ASSY, FOR 2.51 X 3.6 MM                   |
| 21198       | White          | ABS / Gamma & EtO / 2500                | ROLLER CLAMP ASSY, HIGH PRECISION                      |
| 20347       | Blue, White    | PS, ABS / EtO / 5000                    | ROLLER CLAMP ASSY, V                                   |
| 21564       | *              | POM / EtO / 2500                        | ROLLER CLAMP BODY FOR TUBING 4.8 X 6.8                 |
| 30168-01    | White          | ABS / EtO / 2500                        | ROLLER CLAMP BODY/LARGE, WHITE, ABS                    |
| 21192       | White          | PS / EtO / 5000                         | ROLLER CLAMP FOR TUBE O.D. 4.1MM/.161IN (ASSEMBLED)    |
| 21530       | *              | ACETAL / EtO / 10000                    | ROLLER CLAMP WHEEL                                     |
| 21765       | Blue, White    | ABS / EtO / 2500                        | ROLLER CLAMP, ASSEMBLED                                |
| 21766       | Red, White     |   |  |
| 20337       | Red            | PP / Gamma & EtO / 20000                | ROLLER WHEEL   |
| 20346       | White          | PP / EtO / 20000                        | ROLLER WHEEL   |
| 30168-02    | White          | ABS / EtO / 10000                       | ROLLER WHEEL /LARGE                                    |

21192

\* = Information Available Upon Request

## Slide Clamps

| PART NUMBER | COLOR   | MATERIAL/<br>STERILIZATION/<br>QUANTITY | DESCRIPTION  |
|-------------|---------|---|--|
| 60013       | Natural | HDPE / Gamma & EtO / 5000               | SLIDE CLAMP  |
| 20717       | Blue    | PP / Gamma, EtO & Steam / 10000         | SLIDE CLAMP FOR TUBE ODS 2.0-2.5-3.0-4.1 MM              |
| 20401       | White   | HDPE / Gamma & EtO / 30000              | SLIDE CLAMP FOR TUBES 2-2.5MM / .078-.099IN              |
| 20719       | Blue    | PP / EtO / 10000                        | SLIDE CLAMP FOR TUBES O.D. 5.5MM - 6.8MM .217IN - .268IN |
| 21764       | Blue    | PP / EtO / 10000                        | SLIDE CLAMP, OPEN JAW                                    |
| 20291       | Blue    | HDPE / Gamma & EtO / 30000              | SLIDE CLAMP, SMALL, OPEN                                 |
| 20311       | White   | PP / Gamma, EtO & Steam / 10000         | SLIDE CLAMP  |



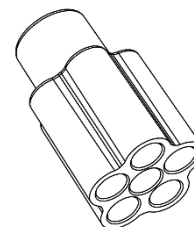
std.packing: 10,000 pcs

20719

# Connectors

## 5 to 1, 6 to 1

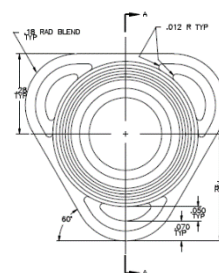
| PART NUMBER | COLOR   | MATERIAL/<br>STERILIZATION/<br>QUANTITY | DESCRIPTION               |
|-------------|---------|---|---------------------------|
| 21700       | Natural | PP / * / 2500                           | 2 PC, 5 IN 1<br>CONNECTOR |
| 21265       | *       | ABS / Gamma &<br>EtO / 10000            | CONNECTOR, 6 TO 1         |
| 60024       | *       | PC / Gamma &<br>EtO / *                 |                           |



60024

## Adaptors

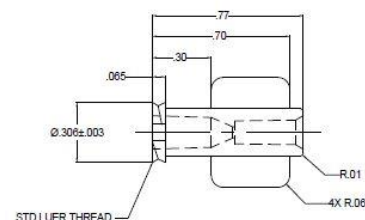
| PART NUMBER | COLOR           | MATERIAL/<br>STERILIZATION/<br>QUANTITY | DESCRIPTION   |
|-------------|-----------------|---|---|
| 21844       | Natural         | PC / Gamma &<br>EtO / *                 | 1/4 PERFUSION<br>ADAPTOR WITH LUER                            |
| 21843       | Clear           | PC / Gamma &<br>EtO / *                 | 1/4 PERFUSION W/ NUT  |
| 21842       | Clear           | PC / Gamma &<br>EtO / *                 | 3/8 STRAIGHT  |
| 21841       | Clear           | PC / Gamma &<br>EtO / *                 | 3/8 X 1/2 RDCR. W/<br>LUER                                    |
| 60017       | Blue            | PVC / EtO / 2000                        | ADAPTOR, 1/4" ID  |
| 21225       | Natural         | COPE / Gamma &<br>EtO / *               | FEMALE LUER LOCK<br>ADAPTOR FOR .078 OD<br>TUBE, LIPID RESIST |
| 21226       | Natural         | COPE / Gamma &<br>EtO / 20000           | FEMALE LUER LOCK<br>ADAPTOR FOR .085 OD<br>TUBE, LIPID RESIST |
| 8107152     | Natural,<br>Red | PP / * / 5000                           | LATCH, SNAP-IN,<br>LIBERTY-CONNECT                            |



60017

\* = Information Available Upon Request

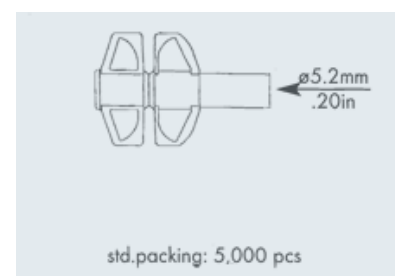
|       |              |                          |   |
|-------|--------------|--------------------------|---|
| 20227 | Clear        | PC / Gamma & EtO / 10000 | LUER ADAPTOR, FEMALE, ANNEALED  |
| 20228 | Clear        | PC / Gamma & EtO / 10000 | LUER ADAPTOR, MALE, ANNEALED  |
| 60014 | Clear        | PVC / * / 200000         | REFLUX CONNECTOR, L-370   |
| 21702 | Clear        | PC / EtO / 1000          | SBT_ELBOW   |
| 21733 | Clear, White | PC / Gamma & EtO / *     | SMART SITE, Y-BODY VALVE ASSEMBLY, 5100R                                  |
| 60018 | Natural      | PP / EtO / 10000         | STRAIGHT THROUGH CONNECTOR WITH 500 SERIES BARBS, 1/4" (6.25MM) ID TUBING |



20227

## Bag Ports

| PART NUMBER | COLOR                       | MATERIAL/<br>STERILIZATION/<br>QUANTITY | DESCRIPTION   |
|-------------|-----------------------------|---|---|
| 37618000    | Natural                     | PVC / Gamma & EtO / 10000               | BAG PORT FOR TUBE OD 6.5MM/ .256IN                              |
| 21760       | Yellow, White, Red, Natural | PP / EtO / 1500                         | BAG SPIKE, VENTED DRIP, NON-PVC, UV BLOCKING, 15UM FILTER W/CAP |
| 21722       | Clear                       | PC / Gamma & EtO / 2000                 | SWABABLE BAG ACCESS PORT  |
| 20391       | Clear                       | PVC / EtO / 5000                        | TWIST OFF SPIKE BAG PORT  |
| 21758       | *                           | PVC / Gamma & EtO / 5000                | TWIST-OFF BAG PORT W/PLUG, DEHP-FREE                            |
| 21531       | *                           | EVA / EtO / 5000                        | TWIST-OFF BAG PORT, 2-SLIT, SOFT EVA, DEHP-FREE                 |
| 20221       | Clear                       | COPOLYESTER / Gamma & EtO / 6000        | Y PORT, SWABBABLE, 3 COPOLYESTER                                |

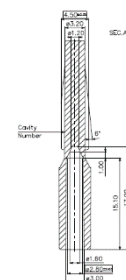


20391

\* = Information Available Upon Request

## Breakable Connectors

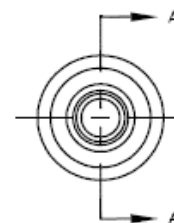
| PART NUMBER | COLOR   | MATERIAL/<br>STERILIZATION/<br>QUANTITY | DESCRIPTION  |
|-------------|---------|---|--|
| 21016       | Natural | PC / EtO / *                            | BREAKABLE CONNECTOR FOR DOUBLE EVA BAG AND TUBE ID 4.5MM |
| 21826       | *       | PC / EtO / *                            | MALE LUER LOCK WITH BREAKABLE TIP FOR TUBE ID 6.7MM      |
| 60030       | *       | PC / * / 10000                          | MALE LUER, BREAKABLE SEAL                                |



21016

## Bowl Connectors

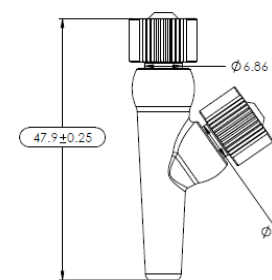
| PART NUMBER | COLOR   | MATERIAL/<br>STERILIZATION/<br>QUANTITY | DESCRIPTION                     |
|-------------|---------|---|---------------------------------|
| 60028       | Natural | PVC / * / 12000                         | CONNECTOR, BOWL, POOLING BOTTLE |



60028

## ENFIT

| PART NUMBER | COLOR   | MATERIAL/<br>STERILIZATION/<br>QUANTITY | DESCRIPTION                     |
|-------------|---------|---|---------------------------------|
| 60066       | *       | * / * / *                               | BONDED Y-PORT W/ENFIT CONNECTOR |
| 60070       | Natural | * / * / *                               | FEMALE ENFIT CONNECTOR          |
| 60072       | Purple  | * / * / *                               |                                 |

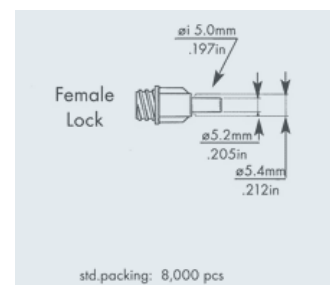


60066

\* = Information Available Upon Request

## Large Bore Female

| PART NUMBER | COLOR  | MATERIAL/<br>STERILIZATION/<br>QUANTITY | DESCRIPTION   |
|-------------|--------|---|---|
| 20434       | Clear  | ABS / EtO / 8000                        | BIG BORE FEMALE LOCK CAP CONNECTOR TUBE I.D. OF 5MM/.197IN    |
| 20287       | White  | ABS / EtO / 10000                       | BIG BORE FEMALE LOCK CONNECTOR FOR EVA TUBE I.D. 4.8MM/.189IN |
| 20992       | White  | ABS / EtO / 10000                       |   |
| 20290       | White  | ABS / EtO / 8000                        | BIG BORE FEMALE LOCK CONNECTOR PVC TUBE ID 4.8MM/.189IN       |
| 20990       | White  | ABS / Gamma & EtO / 10000               | CLOSED FEMALE LOCK CAP, BIG BORE, NON-VENTED                  |
| 20602       | Clear  | PVC / EtO / 5000                        | CONN, FEMALE, DIN, FOR 6.8 MM                                 |
| 26808000    | *      | PVC / Gamma, Beta & EtO / 9000          | CONN, FEMALE, DIN, FOR 6.8 MM OD TUBE                         |
| 21363       | *      | ABS / EtO / 10000                       | CONNECTOR, LARGE BORE, FEMALE, 8MM                            |
| 21385       | Yellow | ABS / EtO / 8000                        | FEMALE CONNECTOR, LARGE BORE FOR .236" TUBE                   |
| 21667       | *      | * / * / 10000                           | FEMALE LUER LOCK CONNECTOR FOR 5.5MM TUBE OD                  |

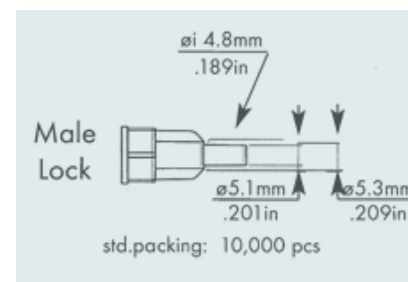


20434

\* = Information Available Upon Request

## Large Bore Male

| PART NUMBER | COLOR      | MATERIAL/<br>STERILIZATION/<br>QUANTITY | DESCRIPTION  |
|-------------|------------|---|--|
| 20289       | White      | ABS / EtO / 7000                        | BIG BORE MALE LOCK CONNECTOR FOR PVC TUBE I.D. 4.8MM/.189IN          |
| 20987       | White      | ABS / EtO / 10000                       | BIG BORE MALE LOCK CONNECTOR FOR PVC TUBE I.D. 4.8MM/.189IN          |
| 20995       | White      | ABS / Gamma & EtO / 10000               | CAP, MALE, BIG BORE, NON-VENTED                                      |
| 20608       | *          | PVC / Gamma & EtO / 10000               | CONN, MALE DIN, FOR 6.8 MM   |
| 21364       | *          | ABS / EtO / 10000                       | CONNECTOR, LARGE BORE, MALE, 8MM                                     |
| 21775       | Natural    | ABS / * / 5000                          | CONNECTOR, MALE INSTILL  |
| 20433       | Clear      | ABS / EtO / 7000                        | CONNECTOR, MALE, LG BORE, FOR 5 MM TUBE                              |
| 20396       | *          | PVC / EtO / 5000                        | CONNECTOR, MALE, ULTRAFILTRATION                                     |
| 21668       | Light Blue | PVC / Gamma & EtO / 5000                | DIALYZER CONNECTOR, SEMI-RIGIDTYPE, FOR 5.6 DIAMETER TUBING, NEUTRAL |

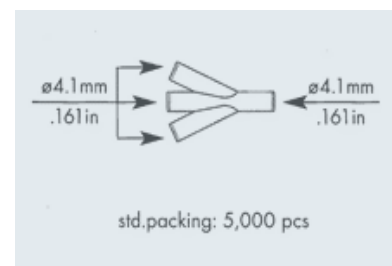


20987

\* = Information Available Upon Request

## Multi-Way Connectors

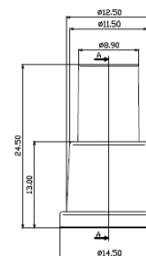
| PART NUMBER | COLOR   | MATERIAL/<br>STERILIZATION/<br>QUANTITY | DESCRIPTION   |
|-------------|---------|---|---|
| 21641       | *       | PVC / EtO / 5000                        | 4-WAY-<br>CONNECTOR FOR<br>6.8MM OD TUBE,<br>DEHP-FREE          |
| 20646       | Natural | PVC / EtO / 5000                        | 4-WAY-<br>CONNECTOR FOR<br>6.8MM/.268IN OD TUBE                 |
| 20460       | Natural | PVC / Gamma &<br>EtO / 5000             | Y-CONN, 4-WAY, FOR<br>4.1 MM TUBE                               |
| 20457       | Clear   | PVC / Gamma &<br>EtO / 3500             | Y-CONN, 4-WAY, FOR<br>6.8 MM TUBE, DEHP<br>FREE                 |
| 21625       | *       | PVC / Gamma &<br>EtO / 22000            | Y-CONN, 4-WAY,<br>PARALLEL FOR 4.1MM<br>OD TUBES, DEHP-<br>FREE |



20460

## Pump Connectors

| PART NUMBER | COLOR   | MATERIAL/<br>STERILIZATION/<br>QUANTITY | DESCRIPTION  |
|-------------|---------|---|--|
| 20681       | Natural | PVC / EtO / 10000                       | PVC PUMP<br>CONNECTOR FOR<br>TUBE ID 7.00-OD-<br>10.00MM/ .276 -<br>OD.394IN |



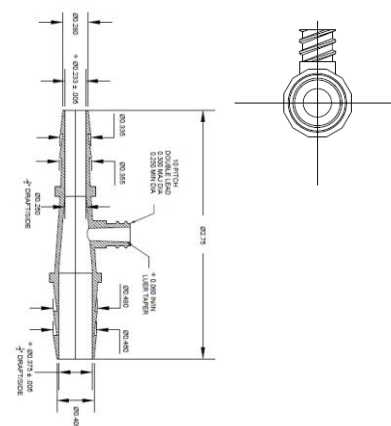
20681

\* = Information Available Upon Request



## Reducers

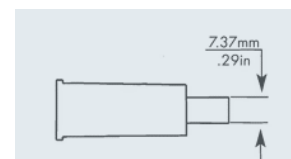
| PART NUMBER | COLOR | MATERIAL/<br>STERILIZATION/<br>QUANTITY | DESCRIPTION                          |
|-------------|-------|---|--------------------------------------|
| 21681       | Clear | PC / Gamma &<br>EtO / *                 | 1/ 4X3/ 8 RDCR. W/<br>LUER           |
| 10718000    | *     | PVC / Gamma,<br>Beta & EtO /<br>40000   | REDUCER 6.8MM TO<br>5.5MM, DEHP-FREE |



21681

## Suction Connectors

| PART NUMBER | COLOR     | MATERIAL/<br>STERILIZATION/<br>QUANTITY | DESCRIPTION                                  |
|-------------|-----------|---|--|
| 21548       | White     | PVC / EtO / *                           | 14 FR CONNECTOR,<br>SUCTION, DEHP-FREE       |
| 21557       | Blue      | PVC / EtO / *                           |  |
| 20320       | Blue      | PVC / Gamma &<br>EtO / 2500             | 16 FR, SUCTION<br>CONNECTOR,<br>WITHOUT STEP |
| 21602       | Blue      | PVC / EtO / 1600                        | 18 FR, SUCTION<br>CONNECTOR                  |
| 60026-01    | Blue      | PVC / Gamma &<br>EtO / 1500             | 18 FR, SUCTION<br>CONNECTOR                  |
| 21628       | White     | PVC / EtO / 2500                        | 19 FR, SUCTION<br>CONNECTOR                  |
| 21462       | Blue      | PVC / EtO / 2500                        | 20 FR, SUCTION<br>CONNECTOR, DEHP-<br>FREE   |
| 21463       | Blue, Red | PVC / EtO / 800                         | 24 FR, SUCTION<br>CONNECTOR                  |
| 21607       | Yellow    | PVC / EtO / *                           | 26 FR, SUCTION<br>CONNECTOR                  |
| 20429       | Blue      | PVC / EtO / 3000                        | 28 FR, CONNECTOR,<br>SUCTION                 |
| 21589       | White     | PVC / EtO / *                           | 28 FR, SUCTION<br>CONNECTOR                  |



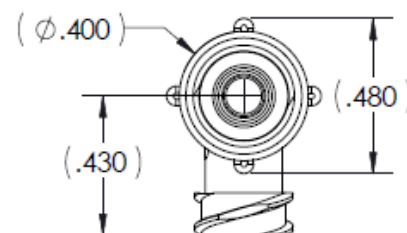
20320

\* = Information Available Upon Request

|       |      |                  |                           |
|-------|------|------------------|---------------------------|
| 20430 | Blue | PVC / EtO / 2500 | 30 FR, CONNECTOR, SUCTION |
|-------|------|------------------|---------------------------|

## T-Connectors

| PART NUMBER | COLOR   | MATERIAL/<br>STERILIZATION/<br>QUANTITY | DESCRIPTION   |
|-------------|---------|---|---|
| 21822       | Clear   | PC / Gamma & EtO / *                    | T CONNECTOR W/<br>SWIVEL NUT                        |
| 14608100    | Clear   | PVC / EtO / 10000                       | T-CONN W/FEMALE<br>LUER                             |
| 21829       | *       | PP / Gamma & EtO / *                    | TEE CONNECTOR<br>WITH 1/8" BARB                     |
| 21696       | Natural | PC / EtO & Steam / 1000                 | TEE, TUBING POCKET,<br>FEMALE                       |
| 21084       | White   | PVC / EtO / 5000                        | T-INJ SITE FOR TUBE<br>OD 4.1MM,<br>PROTECTIVE GRIP |



21822

## Y-Connectors Parallel

| PART NUMBER | COLOR       | MATERIAL/<br>STERILIZATION/<br>QUANTITY | DESCRIPTION   |
|-------------|-------------|---|---|
| 21650       | *           | PP / EtO / *                            | ADULT PARALLEL<br>WYE W/GAS<br>SAMPLING PORT, PP<br>ASSEMBLED W/CAP<br>AND STRAP FOR GAS<br>SAMPLING PORT |
| 20285       | Clear       | PC / Gamma & EtO / *                    | Y-CONN, 3-WAY,<br>PARALLEL FOR .158<br>MM OD TUBE   |
| 21707       | Transparent | PVC / EtO / 10000                       | Y-CONN, 3-WAY,<br>PARALLEL FOR 3.28<br>MM OD TUBE   |
| 20288       | Natural     | PVC / EtO / 5000                        | Y-CONN, 3-WAY,<br>PARALLEL FOR 4.1<br>MM OD TUBE  |

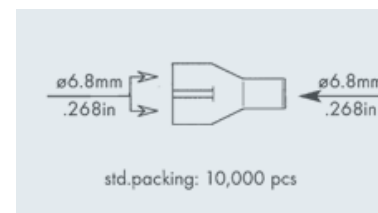


std.packing: 10,000 pcs

20288

\* = Information Available Upon Request

|       |         |                                 |   |
|-------|---------|---------------------------------|---|
| 20417 | Natural | PVC / Gamma & EtO / 20000       | Y-CONN, 3-WAY, PARALLEL FOR 4.1 MM OD TUBE            |
| 20388 | Natural | PVC / Gamma & EtO / 10000       | Y-CONN, 3-WAY, PARALLEL FOR 6.8 MM OD TUBE            |
| 20389 | Natural | PVC / EtO / 10000               | Y-CONN, 3-WAY, PARALLEL FOR 6.8 MM OD TUBE            |
| 21645 | *       | PVC / EtO / 10000               | Y-CONN, 3-WAY, PARALLEL FOR 6.8 MM OD TUBE DEHP-FREE  |
| 21647 | *       | PVC / Gamma, Beta & EtO / 10000 | Y-CONN, 3-WAY, PARALLEL FOR 6.8 MM OD TUBE, DEHP-FREE |
| 21576 | *       | PVC / EtO / *                   | Y-CONNECTOR, PARALLEL PORTS, SOFT PVC                 |



20388

## Y-Connectors Split

| PART NUMBER | COLOR      | MATERIAL/<br>STERILIZATION/<br>QUANTITY | DESCRIPTION   |
|-------------|------------|---|---|
| 10508000    | Natural    | PVC / Gamma, Beta & EtO / 4000          | 3-WAY Y-CONNECTOR, 265" ID  |
| 20170       | Clear      | ABS / Gamma & EtO / *                   | 3-WAY Y-CONN  |
| 21618       | *          | PVC / EtO / *                           | 3-WAY Y-CONNECTOR   |
| 10338000    | Natural    | PVC / Gamma, Beta & EtO / 10000         | 3-WAY Y-CONNECTOR   |
| 14838000    | Natural    | PVC / Gamma & EtO / 8000                | 3-WAY Y-CONNECTOR   |
| 21640       | *          | PVC / EtO / *                           | 3-WAY Y-CONNECTOR FOR DOUBLE PUMP PVC SEGMENT 9.54MM OD, PVC, DEHP-FREE |
| 21624       | Light Blue | PVC / Gamma, Beta & EtO / 20000         | 3-WAY Y-CONNECTOR, NO DOP, SEMIRIGID PVC                                |



21618

\* = Information Available Upon Request

|          |             |                           |  |
|----------|-------------|---------------------------|--|
| 20264    | Natural     | PVC / EtO / 5000          | 4-WAY-CONNECTOR FOR 5.5MM OD TU                                  |
| 20641    | Natural     | ABS / Gamma & EtO / 10000 | ASYMMETRICAL "Y", CONNECTOR, TUBE OD 4.1MM WITH FEMALE LUER LOCK |
| 50058    | Clear       | PVC / EtO / 10000         | CONNECTOR, Y, PLUG STYLE   |
| 21079    | Natural     | ABS / EtO / 10000         | LONG Y-CONNECTOR W/BIG INJECTION SITE FOR TUBE OD 4.1MM          |
| 21736    | Clear       | PC / Gamma & EtO / 2000   | SMART Y-SITE NON-DEHP  |
| 10238000 | Natural     | PVC / Gamma & EtO / 20000 | Y-CONN, 3-WAY, FOR 4.1 MM OD                                     |
| 20281    | Natural     | PVC / EtO / 10000         | Y-CONN, 3-WAY, FOR 3.0 MM OD TUBING                              |
| 20235    | Clear       | PVC / EtO / 5000          | Y-CONN, 3-WAY, FOR 6.8 MM ID TUBE                                |
| 21715    | Transparent | PVC / EtO / 10000         | Y-CONN, 4-WAY FOR .041MM TUBE, PVC, DEHP-FREE                    |
| 20282    | Natural     | PVC / EtO / 5000          | Y-CONN, 4-WAY, FOR 4.1 MM OD TUBING                              |
| 20256    | Clear       | PVC / EtO / 10000         | Y-CONN, LUER ACTIVATED, FOR 4.1 MM OD TUBING                     |
| 21077    | Natural     | ABS / Gamma & EtO / *     | Y-CONNECTOR FOR 4.1MM TUBE WITH INJECTION PLUG, LATEX FREE       |
| 60019    | Natural     | PP / EtO / 10000          | Y-CONNECTOR WITH 400 SERIES BA                                   |
| 21506    | *           | PVC / EtO / 2500          | Y-CONNECTOR, 1/4"  |
| 21505    | *           | PVC / EtO / 2500          | Y-CONNECTOR, 3/16"   |
| 20458    | Clear       | PVC / Gamma & EtO / 3500  | Y-CONNECTOR, 3-WAY, FOR 6.8 MM TUBE, PVC -DEHP FREE, GAMMA       |



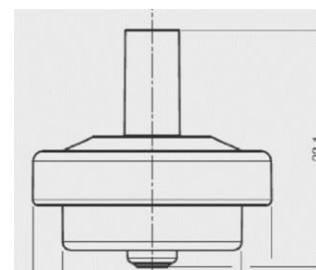
20641

\* = Information Available Upon Request

# Drip Chambers

## Covers

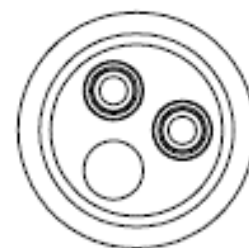
| PART NUMBER | COLOR | MATERIAL/<br>STERILIZATION/<br>QUANTITY | DESCRIPTION                                  |
|-------------|-------|---|--|
| 21573       | Blue  | PVC / EtO / *                           | COVER, DRIP CHAMBER, 19M FOR TUBING OD 4.1MM |



21573

## Drip Chamber Assembly Vented

| PART NUMBER | COLOR | MATERIAL/<br>STERILIZATION/<br>QUANTITY | DESCRIPTION  |
|-------------|-------|---|--|
| 21579       | Red   | PVC / EtO / 1000                        | ASSEMBLED DRIP CHAMBER, FOR OD 4.1MM W/TWO-WAY COVER FOR TUBE OD 4.1MM |
| 21588       | *     | PVC / EtO / *                           | ASSEMBLED DRIP CHAMBER, FOR OD 4.1MM W/TWO-WAY COVER FOR TUBE OD 4.1MM |
| 21630       | *     | PVC / EtO / 700                         | DRIP CHAMBER 15 DROPS/ML FOR 4.1MM OF TUBING, VENTED, DEHP-FREE        |

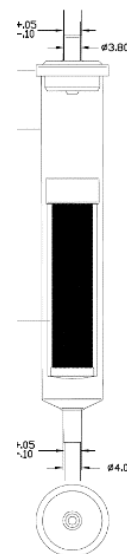


21579

\* = Information Available Upon Request

## Drip Chambers

| PART NUMBER | COLOR | MATERIAL/<br>STERILIZATION/<br>QUANTITY | DESCRIPTION   |
|-------------|-------|---|---|
| 21421       | *     | PVC / EtO / 500                         | DRIP CHAMBER 20 DROP FOR 4.1 MM OD TUBING W/ 270 UM FILTER      |
| 21586       | *     | PVC / EtO / 1000                        | DRIP CHAMBER FOR 4.1MM OD TUBE, DEHP-FREE                       |
| 21639       | *     | PVC / Gamma, Beta & EtO / 400           | DRIP CHAMBER FOR 6.8MM OD TUBE, DEHP-FREE                       |
| 21466       | *     | PVC / EtO / 400                         | DRIP CHAMBER FOR 6.8MM OD TUBING                                |
| 21646       | *     | PVC / EtO / *                           | DRIP CHAMBER FOR 6.8MM OD TUBING W/150 MICRON FILTER, DEHP-FREE |
| 21643       | *     | PVC / EtO / 1000                        | DRIP CHAMBER, 20 DROP FOR 4.1MM OD TUBING, DEHP-FREE            |
| 21574       | *     | PVC / EtO / 1000                        | DRIP CHAMBER, DEHP-FREE   |
| 21479       | *     | PVC / EtO / *                           | DRIP CHAMBER, MEDIUM, DEHP FRE                                  |



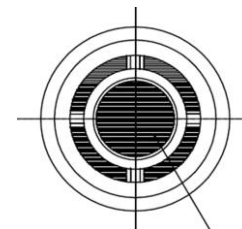
21421

\* = Information Available Upon Request

# Filters

## Filters

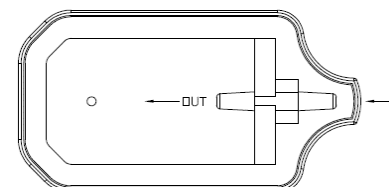
| PART NUMBER | COLOR        | MATERIAL/<br>STERILIZATION/<br>QUANTITY | DESCRIPTION                                    |
|-------------|--------------|---|--|
| 21188       | White        | PE / Gamma & EtO / 10000                | ANTIBACTERIAL HYDROPHOBIC AIRFILTER I.D. 6.5MM |
| 60025       | Natural      | HDPE / Gamma & EtO / 50000              | FILTER, INLET                                  |
| 21748       | Light Yellow | PI / Gamma & EtO / 50000                | PLUG, D8.00/H4.00                              |
| 70021       | Blue         | ABS / Gamma & EtO / 10000               | MALE LUER W/MICROPOROUS FILTER                 |



21188

## IV Filters

| PART NUMBER | COLOR | MATERIAL/<br>STERILIZATION/<br>QUANTITY | DESCRIPTION                                  |
|-------------|-------|---|--|
| 21729       | Clear | CYROLITE / Gamma & EtO / *              | ADULT IV FILTER FOR 3 X 4.1 TUBE, .2 MICRON  |
| 21730       | Blue  | CYROLITE / Gamma & EtO / *              | ADULT IV FILTER FOR 3 X 4.1 TUBE, 1.2 MICRON |
| 21741       | Clear | ACRYLIC / Gamma & EtO / *               | FILTER, SPEEDFLOW ADULT IV, .2 MICRON        |



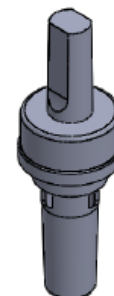
21730

\* = Information Available Upon Request

# Injection Sites/Ports

## Luers

| PART NUMBER | COLOR   | MATERIAL/<br>STERILIZATION/<br>QUANTITY | DESCRIPTION   |
|-------------|---------|---|---|
| 20249       | Clear   | BODY- PVC CAP-<br>PP / EtO / 15000      | INJ SITE, FOR 6.3 MM<br>OD TUBING, LATEX<br>FREE    |
| 21379       | Natural | PP / Gamma &<br>EtO / 10000             | INJ SITE, W/CAP,<br>GAMMA                           |
| 20229       | Clear   | BODY- PVC, CAP-<br>PP / EtO / 15000     | INJECTION SITE FOR<br>.205" FITMENT                 |
| 21041       | Natural | ABS / Gamma &<br>EtO / 20000            | INJECTION SITE FOR<br>TUBE ID 4.8MM,<br>LATEX-FREE  |
| 21372       | *       | KRATON / EtO /<br>7500                  | INJECTION SITE,<br>INLINE, FLASHBACK,<br>LATEX-FREE |
| 21043       | Natural | ABS / EtO / 10000                       | INJECTION SITE, MALE<br>LUER LOCK, LATEX-<br>FREE   |
| 20240       | White   | PC / Gamma &<br>EtO / 20000             | MALE LUER<br>INJECTION SITE                         |
| 20223       | *       | ABS / Gamma &<br>EtO / 20000            | MALE LUER LOCK INJ<br>SITE                          |



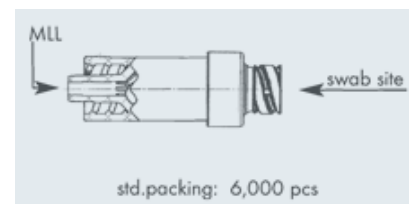
21379

\* = Information Available Upon Request

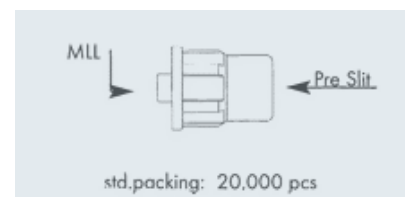


## Pre-Slit/Swabable Needle Free

| PART NUMBER | COLOR                        | MATERIAL/<br>STERILIZATION/<br>QUANTITY | DESCRIPTION  |
|-------------|------------------------------|---|--|
| 21326       | Clear,<br>White              | PC / EtO / *                            | CONNECTOR,<br>NEEDLELESS<br>ACCESS, WITH<br>SWABABLE MALE<br>LUER ACTIVATED<br>VALVE |
| 20408       | Clear                        | ABS / EtO / 20000                       | INJ SITE, PRE-SLIT,<br>MALE LUER LOCK,<br>(NEEDLE FREE) LATEX<br>FREE                |
| 21445       | *                            | ABS / EtO / 10000                       | INJECTION SITE,<br>NEEDLE-FREE FOR<br>TUBE O.D. 4.1MM                                |
| 21706       | *                            | ABS / Gamma &<br>EtO / 10000            | INJECTION SITE,<br>NEEDLE-FREE FOR<br>TUBE O.D. 4.1MM                                |
| 21350       | Clear                        | ABS / EtO / 9000                        | INJECTION SITE,<br>NEEDLE-FREE FOR<br>TUBE O.D. 4.1MM (.144<br>MIN)                  |
| 21714       | Clear w/<br>Blue<br>Colorant | PC / Gamma &<br>EtO / 2000              | SWABABLE SITE<br>W/MALE SLIP, DEHP-<br>FREE  |



21326

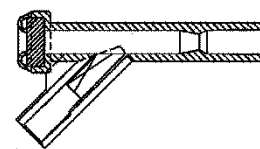


20408

\* = Information Available Upon Request

## Y-Site

| PART NUMBER | COLOR | MATERIAL/<br>STERILIZATION/<br>QUANTITY             | DESCRIPTION  |
|-------------|-------|---|--|
| 20254       | Clear | ABS / EtO / 10000                                   | INJ SITE, Y, FOR 4.1 MM OD TUBING, LATEX FREE        |
| 20303       | Clear | ABS / Gamma & EtO / 15000                           | INJ SITE, Y, W/ LUER TAPER & 4.1 MM OD TUBING, GAMMA |
| 20125       | Clear | BODY- ABS,<br>SEPTUM- PI /<br>Gamma & EtO /<br>9000 | Y-SITE   |



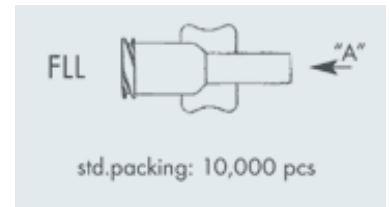
20125

\* = Information Available Upon Request

# Luers

## Female Luers

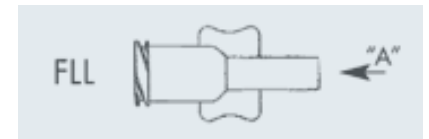
| PART NUMBER | COLOR   | MATERIAL/<br>STERILIZATION/<br>QUANTITY | DESCRIPTION                                  |
|-------------|---------|---|--|
| 21302       | Natural | PVC / EtO / *                           | FEMALE LUER LOCK ADAPTOR FOR .062 OD TUBE    |
| 21295       | Natural | PC / EtO / 10000                        | FEMALE LUER LOCK ADAPTOR FOR .091 OD TUBE    |
| 21308       | Natural | PVC / EtO / *                           | FEMALE LUER LOCK ADAPTOR FOR .105 OD TUBE    |
| 21309       | Natural | PVC / EtO / *                           | FEMALE LUER LOCK ADAPTOR FOR .127 OD TUBE    |
| 21312       | Natural | PVC / EtO / *                           | FEMALE LUER LOCK ADAPTOR FOR .143 OD TUBE    |
| 21300       | Natural | PC / EtO / 10000                        | FEMALE LUER LOCK ADAPTOR FOR .156 OD TUBE    |
| 21301       | Natural | PC / EtO / *                            | FEMALE LUER LOCK ADAPTOR FOR .187 OD TUBE    |
| 21315       | Natural | PVC / EtO / *                           | FEMALE LUER LOCK ADAPTOR FOR .187 OD TUBE    |
| 21749       | Clear   | PC / Gamma & EtO / 1000                 | FEMALE LUER LOCK CONNECTOR                   |
| 20151       | Clear   | PVC / Gamma & EtO / 22000               | FEMALE LUER LOCK CONNECTOR FOR .118" TUBE OD |
| 20464       | Clear   | PC / EtO / 2500                         | FEMALE LUER LOCK FOR .146 MM OD TUBE         |
| 26915100    | Clear   | PVC / Gamma & EtO / *                   | FEMALE LUER LOCK FOR 2 MM OD TUBING          |
| 21703       | Clear   | ABS / EtO / 35000                       | FEMALE LUER LOCK FOR 2.3 MM TUBING           |



21309

\* = Information Available Upon Request

|          |         |                            |  |
|----------|---------|----------------------------|--|
| 20317    | Clear   | PVC / EtO / 12800          | FEMALE LUER LOCK FOR 2.5 MM ID TUBE                  |
| 20374    | Natural | PVC / Gamma & EtO / 10000  | FEMALE LUER LOCK FOR 4.1 MM OD TUBE                  |
| 20217    | Clear   | PC / Gamma & EtO / *       | FEMALE LUER LOCK FOR 4.75 MM TUBING                  |
| 20275    | Clear   | PC / Gamma & EtO / 20000   | FEMALE LUER LOCK FOR 5.5 MM OD TUBING                |
| 20558    | Natural | PVC / Gamma & EtO / 10000  | FEMALE LUER LOCK FOR 6.8 MM OD TUBE                  |
| 21456    | *       | PVC / Gamma & EtO / *      | FEMALE LUER LOCK FOR ID TUBE FIT, 3.91-4.88 MM TAPER |
| 20407    | Natural | PVC / EtO / 10000          | FEMALE LUER LOCK FOR TUBE O.D. 2.0MM.                |
| 20354    | Natural | PVC / Gamma & EtO / 10000  | FEMALE LUER LOCK FOR TUBE OD 5.5MM, DEHP-FREE        |
| 20248    | Natural | PC / EtO / 2500            | FEMALE LUER LOCK FOR TUBE OD 6.8MM, DEHP-FREE        |
| 21754    | Blue    | PVC / Gamma & EtO / 25000  | FEMALE LUER LOCK W/BREAKABLE SEAL                    |
| 21638    | Blue    | PVC / EtO / 10000          | FEMALE LUER LOCK W/WINGS FOR .120/.150 ID            |
| 21461    | Blue    | PVC / EtO / *              | FEMALE LUER LOCK WINGED, 5.0 MM OD TUBE              |
| 21644    | *       | PVC / EtO / 10000          | FEMALE LUER WITH CAP, RECIRCULATING                  |
| 20398    | Natural | PC / Gamma & EtO / 25000   | FEMALE LUER, FOR .158 X .164 ID BOND                 |
| 20379    | Natural | PC / Gamma & EtO / 7200    | LUER LOCK, FEMALE, FOR 4.1 MM OD TUBING              |
| 20230    | Clear   | PVC / EtO / 10000          |  |
| 21380    | *       | PP / EtO / 8000            |  |
| 21457    | *       | PC / EtO / *               |  |
| 26935100 | *       | PVC / Gamma & Beta / 25000 |  |



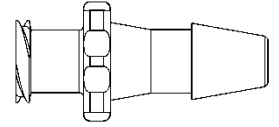
20317

\* = Information Available Upon Request

|          |   |                           |   |
|----------|---|---------------------------|---|
| 26938400 | * | ABS / Gamma & EtO / 25000 | LUER LOCK, FEMALE, FOR 4.1 MM OD TUBING |
|----------|---|---------------------------|---|

## Barbed Female Luers

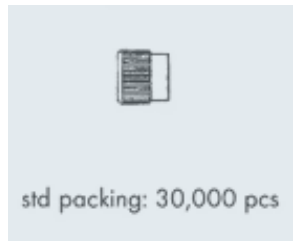
| PART NUMBER | COLOR | MATERIAL/<br>STERILIZATION/<br>QUANTITY | DESCRIPTION                                |
|-------------|-------|---|--|
| 21828       | *     | PP / Gamma & EtO / *                    | FEMALE LUER LOCK TO 5/32" BARB             |
| 21532       | *     | PP / EtO / 1000                         | FEMALE LUER LOCK TO BARB FOR 1/16" ID TUBE |
| 21555       | *     | PC / EtO / 10000                        | FEMALE LUER LOCK TO BARB FOR 1/4" ID TUBE  |
| 21533       | *     | PP / EtO / 1000                         | FEMALE LUER LOCK TO BARB FOR 1/8" ID TUBE  |
| 21551       | *     | PC / EtO / 10000                        | FEMALE LUER LOCK TO BARB FOR 1/8" ID TUBE  |
| 21411       | *     | NYLON / EtO / *                         | FEMALE LUER LOCK TO BARB FOR 3/16" ID TUBE |
| 21546       | *     | PC / EtO / 10000                        | FEMALE LUER LOCK TO BARB FOR 3/16" ID TUBE |



21411

## Locking Rings

| PART NUMBER | COLOR   | MATERIAL/<br>STERILIZATION/<br>QUANTITY | DESCRIPTION                                       |
|-------------|---------|---|---|
| 21789       | White   | ZYTEL / * / *                           | FINGER SNAP LUER LOCK RING                        |
| 20518       | Natural | PP / EtO / 30000                        | LOCK RING   |
| 21739       | Natural | PC / Gamma, EtO & Steam / 10000         | MALE LUER INTEGRAL LOCK RING PLUG, CLOSED AT GRIP |



20518

\* = Information Available Upon Request

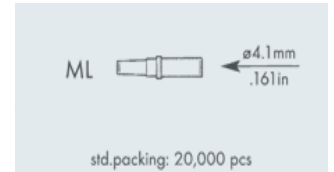
|          |         |                                 |  |
|----------|---------|---------------------------------|--|
| 21738    | Natural | PC / Gamma, EtO & Steam / 10000 | MALE LUER INTEGRAL LOCK RING TO FEMALE LUER THREAD-STYLE COUPLER |
| 20441    | *       | PVC / Gamma & EtO / 10000       | MALE LUER LOCK COUPLING FOR 4.1 & 6.8 OD TUBE                    |
| 21699    | Natural | PC / EtO & Steam / 500          | MALE LUER SLIP COUPLER   |
| 18208502 | Clear   | PS / EtO / 30000                | RING, FOR COUPLING LUER LOCK                                     |
| 20349    | Natural | ABS / Gamma & EtO / 30000       | ROTATING COUPLING  |



18208502

## Male Luers

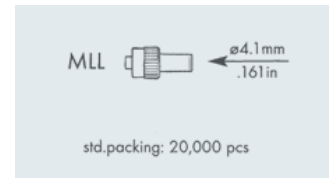
| PART NUMBER | COLOR       | MATERIAL/<br>STERILIZATION/<br>QUANTITY | DESCRIPTION  |
|-------------|-------------|---|--|
| 21279       | Natural     | ACRYLIC / EtO / *                       | ADAPTOR, MALE LUER LOCK<br>2.92/2.67MM/.115/.105IN |
| 20506       | Natural     | PE / EtO / 10000                        | COVER, VENTED, MALE LUER LOCK                      |
| 20589       | White       | ABS / EtO / 20000                       | DOUBLE MALE LUER CONNECTOR                         |
| 20253       | Natural     | ABS / EtO / 20000                       | MALE LUER CONNECTOR FOR TUBE O.D. 4.1MM            |
| 20219       | Clear       | ABS / Gamma & EtO / 20000               | MALE LUER LOCK                                     |
| 21675       | Natural     | HDPE / EtO / 15000                      |  |
| 21767       | Transparent | ABS / Gamma & EtO / 10000               |  |
| 21276       | Natural     | ACRYLIC / EtO / *                       | MALE LUER LOCK ADAPTOR FOR .088 OD TUBE            |
| 21277       | Natural     | ACRYLIC / EtO / *                       | MALE LUER LOCK ADAPTOR FOR .095 OD TUBE            |



20253

\* = Information Available Upon Request

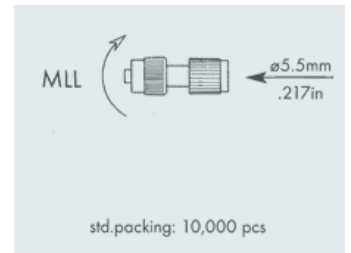
|       |         |                               |  |
|-------|---------|-------------------------------|--|
| 21282 | Natural | ACRYLIC / EtO / *             | MALE LUER LOCK ADAPTOR FOR .143 OD TUBE                        |
| 21285 | Natural | ACRYLIC / EtO / *             | MALE LUER LOCK ADAPTOR FOR .156 OD TUBE                        |
| 21287 | Natural | ACRYLIC / EtO / *             | MALE LUER LOCK ADAPTOR FOR .173 OD TUBE                        |
| 21288 | Natural | ACRYLIC / EtO / 20000         | MALE LUER LOCK ADAPTOR, 4.88/4.62MM/.192/.182IN, CRYOLITE G-20 |
| 21821 | White   | ACRYLIC / Gamma & EtO / *     | MALE LUER LOCK BOND -IN PORT .192/.182                         |
| 20204 | Clear   | ABS / EtO / 30000             | MALE LUER LOCK CONNECTOR                                       |
| 21750 | Clear   | PC / Gamma & EtO / 1000       |  |
| 20280 | Natural | ABS / Gamma & EtO / 10000     | MALE LUER LOCK FOR 3.0 MM OD TUBING                            |
| 20265 | Natural | ABS / Gamma & EtO / 20000     | MALE LUER LOCK FOR 4.1 MM OD TUBING                            |
| 20432 | Natural | PC / Gamma & EtO / 6000       |  |
| 20415 | *       | ACRYLIC / Gamma & EtO / 10000 |  |
| 70037 | Natural | HDPE / Gamma & EtO / 7500     | MALE LUER LOCK FOR 4.1 MM TUBE, ROTATING W/ CAP, ASSEMBLED     |
| 70093 | Red     | HDPE / Gamma & EtO / *        | MALE LUER LOCK FOR 4.1 MM TUBE, ROTATING W/RED CAP, ASSEMBLED  |
| 20276 | Clear   | PC / Gamma & EtO / 5000       | MALE LUER LOCK FOR 4.75 MM OD TUBING                           |
| 20528 | Natural | ABS / EtO / 20000             | MALE LUER LOCK FOR 5.5 MM OD TUBING                            |
| 20412 | Natural | ABS / Gamma & EtO / 20000     | MALE LUER LOCK FOR 6.8 MM OD TUBING                            |
| 21669 | Blue    | PVC / EtO / 20000             |  |



20265

\* = Information Available Upon Request

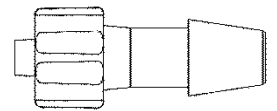
|       |         |                           |   |
|-------|---------|---------------------------|---|
| 21407 | *       | ABS / EtO / *             | MALE LUER LOCK FOR TUBE 3.2MM OD AND 6.0MM                          |
| 20363 | Natural | ABS / Gamma & EtO / 10000 | MALE LUER LOCK FOR TUBE 4.1 MM OD, ROTATING                         |
| 21601 | Clear   | PC / EtO / 5000           | MALE LUER LOCK WITH TUBING POCKET .108-.114                         |
| 21540 | *       | PC / EtO / 10000          | MALE LUER W/ ROTATING RING FOR 1/4" ID TUBE                         |
| 21606 | *       | ABS / EtO / 5000          |   |
| 21398 | *       | ABS / EtO / 10000         | ROTATING MALE LUER LOCK   |
| 21635 | Blue    | PVC / EtO / 10000         | ROTATING MALE LUER LOCK FOR 6.8MM OD TUBE, SELF-EJECTING, DEHP-FREE |
| 21636 | Red     | PVC / Gamma & EtO / 10000 |   |
| 20502 | Red     | ABS / Gamma & EtO / 10000 | ROTATING MALE LUER LOCK FOR TUBE O.D. 3.0MM .118IN                  |
| 20491 | Natural | ABS / EtO / 10000         | ROTATING MALE LUER LOCK FOR TUBE OD 5.5MM                           |



20491

## Barbed Male Luers

| PART NUMBER | COLOR   | MATERIAL/<br>STERILIZATION/<br>QUANTITY | DESCRIPTION  |
|-------------|---------|---|--|
| 21698       | White   | PP / EtO / 10000                        | BARB LOCK  |
| 21697       | Natural | PC / EtO & Steam / 1000                 | MALE LUER SLIP TO BARB                                 |
| 21788       | White   | ZYTEL / * / *                           | MALE LUER TO 500 SERIES BARB, 3/32" (2.4 MM) ID TUBING |
| 21499       | *       | PC / EtO / *                            | MALE LUER LOCK TO BARB FOR 1/4" ID TUBE                |
| 21554       | *       | PC / EtO / 10000                        |  |

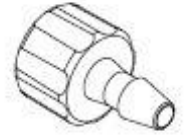


21499

\* = Information Available Upon Request



|       |               |                                  |  |
|-------|---------------|----------------------------------|--|
| 21820 | E-Beam, White | PC / Gamma, EtO & E-Beam / 10000 | MALE LUER LOCK TO BARB FOR 3/16" ID TUBE |
| 21547 | *             | PC / EtO / 10000                 | MALE LUER LOCK TO BARB FOR 5/32" ID TUBE |
| 21545 | *             | PC / EtO / *                     |  |
| 21534 | *             | PP / EtO / 1000                  | MALE LUER LOCK TO BARB FOR 1/8" ID TUBE  |
| 21550 | *             | PC / EtO / 10000                 |  |
| 21659 | *             | PC / Gamma & EtO / 10000         |  |
| 21662 | *             | PC / Gamma & EtO / 5000          |  |
| 21663 | *             | PP / Gamma & EtO / 10000         |  |



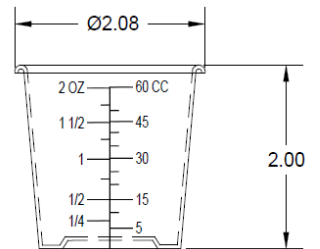
21499

\* = Information Available Upon Request

# Other

## Cups

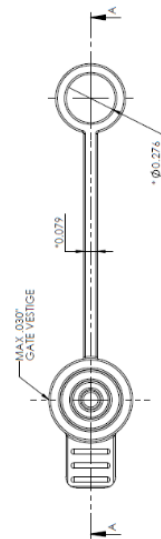
| PART NUMBER | COLOR  | MATERIAL/<br>STERILIZATION/<br>QUANTITY | DESCRIPTION          |
|-------------|--------|---|----------------------|
| 20244       | Clear  | PP / EtO / 1380                         | CUP, 60 CC, CLEAR    |
| 20294       | Red    | PP / EtO / 1380                         | CUP, MEDICINE, 60 CC |
| 20295       | Yellow | PP / EtO / 1380                         | CUP, MEDICINE, 60 CC |



20244

## Other

| PART NUMBER | COLOR           | MATERIAL/<br>STERILIZATION/<br>QUANTITY | DESCRIPTION                           |
|-------------|-----------------|---|---------------------------------------|
| 21774       | *               | PVC / * / 1000                          | CAP TETHER                            |
| 60015       | Clear, Blue     | PVC / * / 10000                         | CARTRIDGE, L-370                      |
| 21658       | Natural,<br>Red | PC / EtO / 1000                         | LAL-TOUHY,<br>ANGIOVAC                |
| 21409       | *               | PP / EtO / 160000                       | STOPPLE                               |
| 21653       | Red             | PE / EtO / *                            | T-4 REC-GATE PE-<br>LD01, RED017      |
| 21654       | *               | PVC / EtO / 6000                        | TUBE W/MEMBRANE<br>FOR 5.0MM OD TUBES |



21774

\* = Information Available Upon Request

# Pillow Chambers

## Pillow Chambers

| PART NUMBER | COLOR | MATERIAL/<br>STERILIZATION/<br>QUANTITY | DESCRIPTION   |
|-------------|-------|---|---|
| 21678       | *     | PVC / EtO / 2000                        | PILLOW CHAMBER,<br>DOUBLE-TUBE, 6 X 7<br>CM, 1.2 ML VOLUME,<br>NO-DOP |
| 21695       | *     | PVC / EtO / 1000                        | PILLOW CHAMBER<br>W/ONE WAY VALVE<br>AND PRINTED<br>ARROW, OD 6.8MM   |
| 21261       | Red   | PVC / EtO / 1000                        | PILLOW, CHAMBER,<br>SINGLE TUBE, 6.8MM,<br>4ML, PRINTED               |
| 21359       | *     | PVC / EtO / 1500                        | PILLOW, PRINTED,<br>ONE TUBE, 3ML                                     |
| 21360       | *     | PVC / EtO / 1000                        | PILLOW, PRINTED,<br>TWO TUBE  |

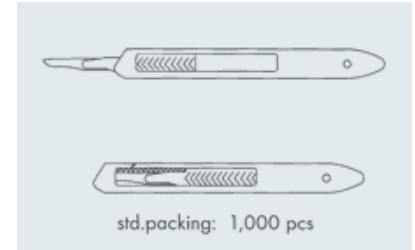


21678

# Safety Products

## Scalpels

| PART NUMBER | COLOR | MATERIAL/<br>STERILIZATION/<br>QUANTITY | DESCRIPTION         |
|-------------|-------|---|---------------------|
| 20270       | Blue  | PE / EtO / 3000                         | SAFETY SCALPEL, #11 |

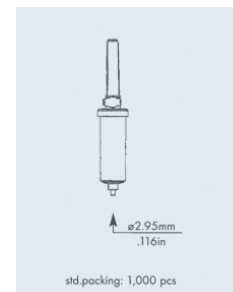


20270

# Chambers

## Chamber Assemblies

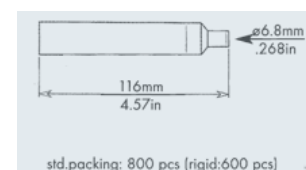
| PART NUMBER | COLOR        | MATERIAL/<br>STERILIZATION/<br>QUANTITY | DESCRIPTION                                     |
|-------------|--------------|---|---|
| 21740       | White        | ABS / Gamma & EtO / *                   | INFUSION CHAMBER W/O SOLUTION FILTER, DEHP-FREE |
| 30127       | Clear, White | PVC, ABS                                | VENTED INFUSION CHAMBER 20 DROP, WITH CAP       |



30127

## Chamber Bodies

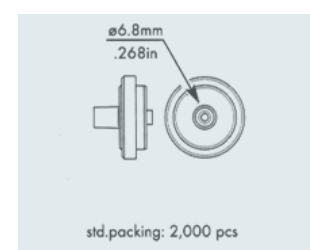
| PART NUMBER | COLOR | MATERIAL/<br>STERILIZATION/<br>QUANTITY | DESCRIPTION            |
|-------------|-------|---|------------------------|
| 20234       | Clear | PVC / EtO / 800                         | CHAMBER FOR 6.8MM TUBE |



20234

## Chamber Caps

| PART NUMBER | COLOR   | MATERIAL/<br>STERILIZATION/<br>QUANTITY | DESCRIPTION                                    |
|-------------|---------|---|--|
| 20399       | Natural | PVC / EtO / 2000                        | CAP, DRIP CHAMBER, LG, PVC, FOR 6.8 MM OD TUBE |
| 21587       | *       | PVC / EtO / 5000                        | 2-WAY COVER FOR TUBE OD 4.1MM, DEHP-FREE       |
| 70002       | *       | * / Gamma & EtO / 2500                  | CAP STRAP ASSEMBLY                             |
| 20402       | *       | PVC / Gamma & EtO / 5000                | CAP, DRIP CHAMBER, 1 PORT, FOR 4.1 MM OD TUBE  |



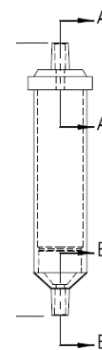
20399

\* = Information Available Upon Request

|       |      |               |  |
|-------|------|---------------|--|
| 21375 | Blue | PVC / EtO / * | CAP, DRIP CHAMBER, FOR 4.1MM OD TUBE                     |
| 21427 | *    | PVC / EtO / * | COVER, ONE-WAY, FOR DRIP CHAMBER, 30MM FOR TUBE OD 6.8MM |

## Drip Chamber Assembly Non-Vented

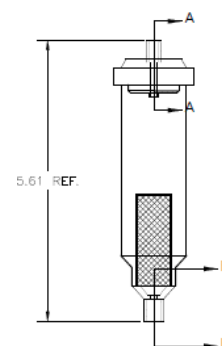
| PART NUMBER | COLOR | MATERIAL/ STERILIZATION/ QUANTITY | DESCRIPTION                           |
|-------------|-------|-----------------------------------|---------------------------------------|
| 20467       | *     | PVC / Gamma & EtO / 1000          | DRIP CHAMBER, ASSY, SMALL, W/O FILTER |



20467

## Drip Chamber Assembly Vented

| PART NUMBER | COLOR | MATERIAL/ STERILIZATION/ QUANTITY   | DESCRIPTION   |
|-------------|-------|-------------------------------------|---|
| 20462       | *     | PVC / EtO / 400                     | DRIP CHAMBER ASSY W/150 MICRON                            |
| 30192       | Red   | PVC / Gamma & EtO / *               | DRIP CHAMBER, 1-2-WAY SMALL, ASSEMBLED, NO DOP            |
| 21762       | *     | PVC / EtO / 1000                    | TRANSFUSION DRIP CHAMBER ASSEMBLY (200 MICRON) PVC NO-DOP |
| 21771       | White | ABS, LDPE, PVC / Gamma & EtO / 1000 | VENTED INFUSION DRIP CHAMBER ASSEMBLY W/FILTER            |

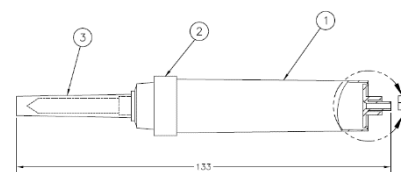


20462

\* = Information Available Upon Request

## Drip Chamber Assembly with Spike Non-Vented

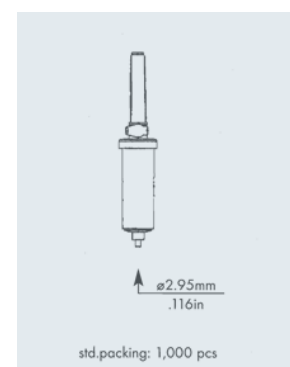
| PART NUMBER | COLOR | MATERIAL/<br>STERILIZATION/<br>QUANTITY                       | DESCRIPTION   |
|-------------|-------|---|---|
| 30138       | Clear | CHAMBER- PVC,<br>SPIKE- ABS CAP-<br>LDPE / Gamma &<br>EtO / * | NON-VENTED 15<br>DROP/ML SPIKE DRIP<br>CHAMBER, IV TUBING<br>FIT LONG |



30138

## Drip Chamber Assembly with Spike Vented

| PART NUMBER | COLOR             | MATERIAL/<br>STERILIZATION/<br>QUANTITY   | DESCRIPTION  |
|-------------|-------------------|---|--|
| 21792       | White             | PE / Gamma & EtO /<br>*   | 15 DROP, UNIVERSAL<br>SPIKE DRIP                                   |
| 30200       | Red               | PVC / Gamma &<br>EtO / 1000   | ASSEMBLED DRIP<br>CHAMBER W/SPIKE<br>AND CAP, DEHP-FREE            |
| 21252       | Clear             | CHAMBER-PVC<br>SPIKE-ABS<br>HOUSING-PE<br>CAP/SPIKE- LDPE /<br>EtO / 800            | DRIP CHAMBER, 15<br>DROP, W/SPIKE,<br>VENTED, W/CAP                |
| 30127       | *                 | PVC / Gamma &<br>EtO / 1000   | VENTED DRIP<br>CHAMBER 20 DROP,<br>W/SPIKE, W/CAP                  |
| 30125       | *                 | CHAMBER-PVC,<br>SPIKE- ABS<br>HOUSING- PE<br>CAP,SPIKE- LDPE /<br>Gamma & EtO / 700 | DRIP CHAMBER,<br>VENTED, 10 DROP/ML<br>FOR 4.1MM OD<br>TUBING      |
| 30197       | Clear,<br>Natural | CHAMBER- PVC,<br>SPIKE- ABS CAP-<br>LDPE / EtO / 700                                | DRIP CHAMBER,<br>VENTED, 20 DPM,<br>DEHP-FREE                      |
| 30100       | *                 | CHAMBER-PVC<br>SPIKE- ABS<br>HOUSING- PE<br>CAP,SPIKE- LDPE /<br>Gamma & EtO / 700  | DRIP CHAMBER,<br>VENTED, 60<br>DROP/+B525ML FOR<br>4.1MM OD TUBING |



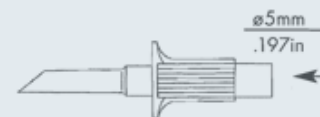
30127

\* = Information Available Upon Request

# Spikes

## Non-Vented Spikes

| PART NUMBER | COLOR  | MATERIAL/<br>STERILIZATION/<br>QUANTITY | DESCRIPTION  |
|-------------|--------|---|--|
| 20241       | White  | ABS / Gamma & EtO / 5000                | SPIKE, NON-VENTED, FOR 6.8MM OD TUBE                                 |
| 21167       | White  | ABS / EtO / 5000                        | NON-VENTED BLOOD SPIKE FOR DRIP CHAMBERS                             |
| 21170       | White  | PE / EtO / 5000                         | NON-VENTED BLOOD SPIKE FOR DRIP CHAMBERS, ISO TYPE                   |
| 20112       | White  | ABS / Gamma & EtO / 3800                | NON-VENTED SPIKE FOR .161" OD TUBE                                   |
| 20341       | White  | ABS / Gamma & EtO / 3000                | SPIKE FOR DRIP CHAMBER, NON-VENTED                                   |
| 20958       | White  | ABS / Gamma & EtO / 5000                | SPIKE, NON-VENTED FOR 4.1 MM TUBE, LG FLANGE                         |
| 20960       | White  | ABS / EtO / 5000                        | SPIKE, NON-VENTED FOR 5.5 MM ID TUBE                                 |
| 20114       | White  | ABS / Gamma & EtO / 4000                | SPIKE, NON-VENTED, ABS, FOR .161" OD TUBE                            |
| 18808403    | *      | ABS / Gamma & EtO / 5000                | SPIKE, NON-VENTED, FOR 4.1MM OD TUBE                                 |
| 20301       | White  | ABS / EtO / 5000                        | SPIKE, NON-VENTED, FOR 5.0 MM OD TUBING                              |
| 18708403    | *      | ABS / Gamma & EtO / 5000                | SPIKE, NON-VENTED, FOR 5.5 MM OD TUBE                                |
| 21629       | Yellow | ABS / Gamma & EtO / 2500                | 1-WAY SPIKE WF/ LARGE FLANGE FOR 4.1MM ID TUBING AND 4.8MM OD TUBING |
| 21429       | *      | LDPE / EtO / 2000                       | SPIKE AND CAP ASSEMBLY   |



std.packing: 5,000 pcs

20301

\* = Information Available Upon Request



## Spike Caps

| PART NUMBER | COLOR   | MATERIAL/<br>STERILIZATION/<br>QUANTITY | DESCRIPTION             |
|-------------|---------|---|-------------------------|
| 21816       | White   | ABS / * / 5000                          | ABS ISO SPIKE           |
| 20111       | Clear   | LDPE / Gamma & EtO / 10000              | VENTED CAP, SPIKE       |
| 20385       | White   | PE / Gamma & EtO / 15000                | VENTED COVER FOR SPIKES |
| 20966       | Natural | PE / Gamma & EtO / 10000                | VENTED COVER FOR SPIKES |
| 20967       | Red     |   |                         |
| 20968       | Blue    |   |                         |

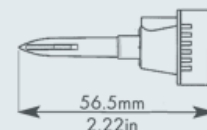


std.packing: 10,000 pcs

20385

## Vented Spikes

| PART NUMBER | COLOR   | MATERIAL/<br>STERILIZATION/<br>QUANTITY                                  | DESCRIPTION   |
|-------------|---------|--|---|
| 20231       | White   | CAP- PE,<br>VENTED SPIKE-<br>ABS, AIR CAP- PP<br>/ Gamma & EtO /<br>4000 | SPIKE, VENTED<br>W/CAP, FEMALE LUER<br>LOCK W/ UNIVERSAL<br>VENTED CAP, 2-WAY |
| 28709900SM  | White   | ABS / Gamma & EtO / 4000   | SPIKE, VENTED,<br>W/CAP, FOR 4.1 MM<br>OD TUBE                                |
| 30154       | White   | ABS / Gamma & EtO / 3000   | SPIKE, W/VENTED<br>CAP, 3 X 4.1 & 4.8 X<br>6.8 MM TUBING                      |
| 21160       | Natural | PVC / Gamma & EtO / *  | VENTED SPIKE FOR<br>DRIP CHAMBER  |
| 30103       | *       | CAP- LDPE<br>SPIKE- ABS<br>FILTER- HDPE /<br>Gamma & EtO /<br>1500       | VENTED SPIKE W/ 1.2<br>MICRON FILTER  |

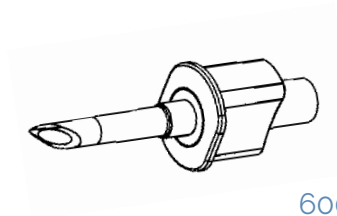


std.packing: 4,000 pcs

21160

\* = Information Available Upon Request

|       |       |  |  |
|-------|-------|--|--|
| 60027 | *     | ACRYLIC,<br>CRYOLITE /<br>Gamma & EtO /<br>4000                    | SPIKE FOR .250" OD<br>TUBING                                 |
| 21590 | Blue  | ABS / EtO / 2000   | SPIKE FOR A 4.1MM<br>OD TUBE, W/ COVER,<br>VENTED, ASSEMBLED |
| 21612 | White | ABS / EtO / 5000   | SPIKE FOR A 4.1MM<br>OD TUBING W/COVER,<br>VENTED, ASSEMBLED |
| 30103 | *     | CAP- LDPE<br>SPIKE- ABS<br>FILTER- HDPE /<br>Gamma & EtO /<br>1500 | VENTED SPIKE W/ 1.2<br>MICRON FILTER                         |



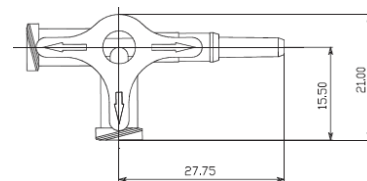
60027

\* = Information Available Upon Request

# Stopcocks

## Multi-Way

| PART NUMBER | COLOR        | MATERIAL/<br>STERILIZATION/<br>QUANTITY | DESCRIPTION   |
|-------------|--------------|---|---|
| 21661       | Natural      | NYLON / EtO / 5000                      | LOCKING MALE X FEMALE X FEMALE 4-WAY STOPCOCK                             |
| 21425       | *            | PC / EtO / *                            | STOPCOCK, 1-WAY MALE LUER SLIP, FEMALE LUER LOCK, W/NON-VENTED CAP        |
| 21352       | *            | PC / EtO / 5000                         | STOPCOCK, 1-WAY, HI-FLOW W/FEMALE LUER + MALE LUER W/LOCKING RING         |
| 21184       | Natural      | PC / EtO / *                            | STOPCOCK, 3-WAY, FEMALE LUER LOCK 2-WAY, 1-WAY FOR TUBE I.D. 3.0MM/.118IN |
| 21478       | *            | PSU / EtO / 3000                        | STOPCOCK, 3-WAY, HI-FLOW  |
| 20266       | Clear, White | POLYSULFONE / Gamma & EtO / 1000        | STOPCOCK, 3-WAY, HI-FLOW, 2 FEMALE, 1 MALE W/LOCK, GAM                    |



21184

\* = Information Available Upon Request

# Transducer Protectors

## Transducer Protectors

| PART NUMBER | COLOR   | MATERIAL/<br>STERILIZATION/<br>QUANTITY | DESCRIPTION  |
|-------------|---------|---|--|
| 20905       | Natural | PVC / Gamma & EtO / 5000                | MALE LUER LOCK (TRANSDUCER PROTECTOR) & FEMALE LUER LOCK (MEMBRENS .20 MICRON) |
| 20377       | Neutral | PVC / Gamma & EtO / 8000                | TRANSDUCER PROTECTOR   |
| 20903       | Clear   | PVC / EtO / 5000                        | TRANSDUCER PROTECTOR, MALE & FEMALE LUER LOCK, GORE MEMBRANE 0.20              |
| 21268       | Natural | PVC, PTFE, POLYESTER / EtO / *          | TRANSDUCER PROTECTOR FOR OD 5.5MM TUBE FITMENT                                 |



20903

\* = Information Available Upon Request

# Index

## 1

10238000, 28  
 10338000, 27  
 10508000, 27  
 10718000, 25  
 14608100, 26  
 14838000, 27  
 18208502, 38  
 18708403, 48  
 18808403, 48  
 18908200, 11

## 2

200320, 15  
 20111, 49  
 20112, 48  
 20114, 48  
 20125, 34  
 20151, 35  
 20170, 27  
 20204, 39  
 20217, 36  
 20219, 38  
 20220, 11  
 20221, 20  
 20223, 32  
 20227, 20  
 20228, 20  
 20229, 32  
 20230, 36  
 20231, 49  
 20234, 45  
 20235, 28  
 20238, 15  
 20239, 15  
 20240, 32  
 20241, 48  
 20244, 42  
 20248, 36  
 20249, 32  
 20252, 16  
 20253, 38  
 20254, 34  
 20255, 11  
 20256, 28  
 20260, 16  
 20261, 16

20262, 15  
 20264, 28  
 20265, 39  
 20266, 51  
 20270, 44  
 20275, 36  
 20276, 39  
 20280, 39  
 20281, 28  
 20282, 28  
 20285, 26  
 20287, 22  
 20288, 26  
 20289, 23  
 20290, 22  
 20291, 18  
 20294, 42  
 20295, 42  
 20301, 48  
 20303, 34  
 20305, 13  
 20308, 11  
 20310, 16  
 20311, 18  
 20317, 36  
 20320, 25  
 20326, 9  
 20337, 17  
 20341, 48  
 20346, 17  
 20347, 17  
 20349, 38  
 20354, 36  
 20356, 8  
 20363, 40  
 20373, 9  
 20374, 36  
 20377, 52  
 20379, 36  
 20384, 10  
 20385, 49  
 20388, 27  
 20389, 27  
 20390, 11  
 20391, 20  
 20396, 23  
 20398, 36  
 20399, 45

\* = Information Available Upon Request

|           |           |
|-----------|-----------|
| 20401, 18 | 20958, 48 |
| 20402, 45 | 20960, 48 |
| 20404, 16 | 20966, 49 |
| 20407, 36 | 20967, 49 |
| 20408, 33 | 20968, 49 |
| 20412, 39 | 20987, 23 |
| 20415, 39 | 20990, 22 |
| 20417, 27 | 20992, 22 |
| 20429, 25 | 20995, 23 |
| 20430, 26 | 21016, 21 |
| 20432, 39 | 21041, 32 |
| 20433, 23 | 21043, 32 |
| 20434, 22 | 21077, 28 |
| 20436, 14 | 21079, 28 |
| 20441, 38 | 21084, 26 |
| 20445, 12 | 21160, 49 |
| 20447, 8  | 21167, 48 |
| 20448, 8  | 21170, 48 |
| 20449, 10 | 21175, 11 |
| 20450, 10 | 21184, 51 |
| 20457, 24 | 21188, 31 |
| 20458, 28 | 21192, 17 |
| 20459, 10 | 21198, 17 |
| 20460, 24 | 21225, 19 |
| 20462, 46 | 21226, 19 |
| 20464, 35 | 21252, 47 |
| 20467, 46 | 21261, 43 |
| 20474, 9  | 21265, 19 |
| 20476, 11 | 21267, 17 |
| 20479, 8  | 21268, 52 |
| 20480, 9  | 21276, 38 |
| 20491, 40 | 21277, 38 |
| 20502, 40 | 21279, 38 |
| 20506, 38 | 21282, 39 |
| 20518, 37 | 21285, 39 |
| 20528, 39 | 21287, 39 |
| 20558, 36 | 21288, 39 |
| 20573, 10 | 21295, 35 |
| 20589, 38 | 21300, 35 |
| 20602, 22 | 21301, 35 |
| 20608, 23 | 21302, 35 |
| 20623, 10 | 21308, 35 |
| 20625, 8  | 21309, 35 |
| 20641, 28 | 21312, 35 |
| 20646, 24 | 21315, 35 |
| 20681, 24 | 21326, 33 |
| 20717, 18 | 21334, 10 |
| 20719, 18 | 21337, 15 |
| 20722, 15 | 21338, 15 |
| 20724, 15 | 21342, 9  |
| 20725, 15 | 21346, 8  |
| 20903, 52 | 21350, 33 |
| 20905, 52 | 21352, 51 |

\* = Information Available Upon Request

|           |           |
|-----------|-----------|
| 21359, 43 | 21548, 25 |
| 21360, 43 | 21550, 41 |
| 21363, 22 | 21551, 37 |
| 21364, 23 | 21554, 40 |
| 21372, 32 | 21555, 37 |
| 21375, 46 | 21557, 25 |
| 21376, 9  | 21560, 11 |
| 21379, 32 | 21564, 17 |
| 21380, 36 | 21573, 29 |
| 21385, 22 | 21574, 30 |
| 21386, 10 | 21576, 27 |
| 21398, 40 | 21579, 29 |
| 21404, 16 | 21584, 14 |
| 21407, 40 | 21586, 30 |
| 21408, 11 | 21587, 45 |
| 21409, 42 | 21588, 29 |
| 21410, 11 | 21589, 25 |
| 21411, 37 | 21590, 50 |
| 21413, 15 | 21599, 9  |
| 21414, 16 | 21601, 40 |
| 21421, 30 | 21602, 25 |
| 21423, 14 | 21606, 40 |
| 21424, 6  | 21607, 25 |
| 21425, 51 | 21608, 16 |
| 21427, 46 | 21610, 13 |
| 21429, 48 | 21611, 15 |
| 21445, 33 | 21612, 50 |
| 21454, 14 | 21613, 9  |
| 21456, 36 | 21618, 27 |
| 21457, 36 | 21622, 10 |
| 21459, 8  | 21624, 27 |
| 21461, 36 | 21625, 24 |
| 21462, 25 | 21626, 15 |
| 21463, 25 | 21627, 15 |
| 21466, 30 | 21628, 25 |
| 21478, 51 | 21629, 48 |
| 21479, 30 | 21630, 29 |
| 21499, 40 | 21634, 9  |
| 21505, 28 | 21635, 40 |
| 21506, 28 | 21636, 40 |
| 21508, 14 | 21637, 9  |
| 21517, 11 | 21638, 36 |
| 21518, 11 | 21639, 30 |
| 21528, 12 | 21640, 27 |
| 21530, 17 | 21641, 24 |
| 21531, 20 | 21643, 30 |
| 21532, 37 | 21644, 36 |
| 21533, 37 | 21645, 27 |
| 21534, 41 | 21646, 30 |
| 21540, 40 | 21647, 27 |
| 21545, 41 | 21650, 26 |
| 21546, 37 | 21651, 15 |
| 21547, 41 | 21652, 15 |

\* = Information Available Upon Request

21653, 42  
 21654, 42  
 21658, 42  
 21659, 41  
 21661, 51  
 21662, 41  
 21663, 41  
 21667, 22  
 21668, 23  
 21669, 39  
 21672, 8  
 21673, 8  
 21675, 38  
 21677, 10  
 21678, 43  
 21681, 25  
 21682, 9  
 21694, 14  
 21695, 43  
 21696, 26  
 21697, 40  
 21698, 40  
 21699, 38  
 21700, 19  
 21702, 20  
 21703, 35  
 21705, 11  
 21706, 33  
 21707, 26  
 21714, 33  
 21715, 28  
 21722, 20  
 21723, 10  
 21727, 13  
 21729, 31  
 21730, 31  
 21733, 20  
 21736, 28  
 21738, 38  
 21739, 37  
 21740, 45  
 21741, 31  
 21748, 31  
 21749, 35  
 21750, 39  
 21754, 36  
 21755, 12  
 21758, 20  
 21760, 20  
 21762, 46  
 21764, 18  
 21765, 17  
 21766, 17  
 21767, 38  
 21768, 7  
 21770, 15  
 21771, 46  
 21774, 42  
 21775, 23  
 21786, 13  
 21788, 40  
 21789, 37  
 21790, 9  
 21791, 17  
 21792, 47  
 21794, 12  
 21816, 49  
 21820, 41  
 21821, 39  
 21822, 26  
 21823, 12  
 21824, 12  
 21825, 12  
 21826, 21  
 21828, 37  
 21829, 26  
 21836, 11  
 21841, 19  
 21842, 19  
 21843, 19  
 21844, 19  
 21867, 8  
 25818200, 11  
 26808000, 22  
 26915100, 35  
 26935100, 36  
 26938400, 37  
 28709900SM, 49  
  
**3**  
 30100, 47  
 30103, 49, 50  
 30125, 47  
 30127, 47  
 30138, 47  
 30154, 49  
 30168-01, 17  
 30168-02, 17  
 30170, 17  
 30192, 46  
 30197, 47  
 30200, 47  
 33508200, 10  
 34418403, 10  
 37018, 17  
 37618000, 20

\* = Information Available Upon Request



**5**

50058, 28

**6**

60007, 11

60013, 18

60014, 20

60015, 42

60016, 12

60017, 19

60018, 20

60019, 28

60024, 19

60025, 31

60026-01, 25

60027, 50

60028, 21

60029, 16, 18

60030, 21

60034, 16

60035, 16

60036, 16

60037, 16

60038, 16

60044, 16

60048, 13

60066, 21

60070, 21

60072, 21

60074, 15

**7**

70002, 45

70006, 6

70020, 6

70021, 31

70037, 39

70093, 39

**8**

8107152, 19

8109789000, 11

8305170000, 11

**C**

C033408403, 10